



TOWN OF MENASHA



Bridging the Fox Cities

Town of Menasha

INCORPORATION

Information

This official mailing from the Town of Menasha contains:

- Overview of the Incorporation Effort – *page 3*
- Incorporation Review Ad Hoc Committee Recommendation Report to the Town Board on November 10, 2014 – *page 6*
- Incorporation Frequently Asked Questions – *page 9*
- Town of Menasha Boundary Maps from 1951 and 2015 – *page 14*
- Town of Menasha Population and Value Map by Neighborhood – *page 15*



Town of Menasha

Municipal Offices ♦ 2000 Municipal Drive ♦ Neenah, WI 54956-5663
Phone: (920) 720-7100 ♦ Fax: (920) 720-7116
www.town-menasha.com

March 2, 2015

Dear Town of Menasha Residents,

At the November 24, 2014 Town Board meeting, the Town Board of Supervisors unanimously passed resolution #141124-8:TB which included the following paragraph:

BE IT FURTHER RESOLVED, that the Town Board directs the Town staff to move forward with an educational campaign to disseminate the results, findings and recommendations of the Incorporation Review Ad Hoc Committee to the residents of the Town of Menasha.

In accordance with the above directive this informational packet contains a summary of the results, findings and recommendations of the Town of Menasha Incorporation Review Ad Hoc Committee, and is being distributed to all residents of the Town of Menasha.

The Town of Menasha Incorporation Review Ad Hoc Committee recently reviewed the positive and negative attributes of the potential incorporation of the Town of Menasha and ultimately recommended that the Town of Menasha move forward with incorporation of the west side of Town and then reunite the newly incorporated village with the east side of Town at a later date. A petition is currently being circulated among residents in the proposed incorporating area. It is anticipated that the petition will be submitted to the Winnebago County Circuit Court in March or April 2015. The incorporation process is lengthy and probably will not be resolved until Spring or Summer of 2016.

You can find this mailing and additional information by visiting the Town of Menasha website at:

<http://www.town-menasha.com/incorporation-information/>

Questions and Comments

Any questions or comments can be directed to the following:

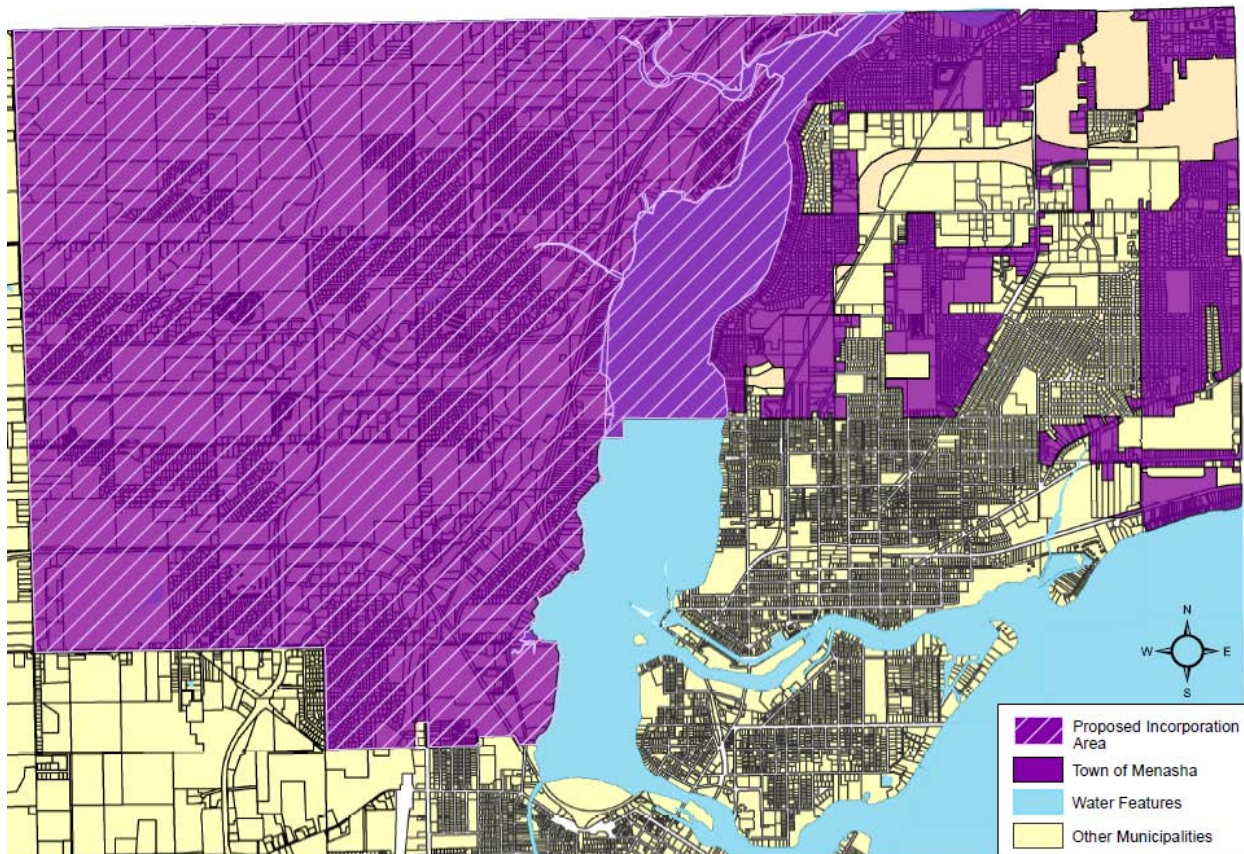
E-mail: info@town-menasha.com
Website comment: www.town-menasha.com/contact/
24 hour phone line (please leave message): (920) 720-7135

Sincerely,

Jeffrey Sturgell
Town Administrator

Overview of the Incorporation Effort

On December 16, 2014, two Town of Menasha residents, Dick Jones and Arden Tews, published in the *Appleton Post-Crescent* and *Oshkosh Northwestern* their notice of intent to circulate a petition to incorporate the west side of the Town of Menasha. This action formally initiated the process to incorporate the west side of the Town into the Village of Fox Crossing, and was based upon the final report and recommendation of the Town of Menasha Incorporation Review Ad Hoc Committee.



Incorporation Review Ad Hoc Committee

In January 2014 the Town of Menasha Board of Supervisors created the Incorporation Review Ad Hoc Committee to review the positive and negative attributes of incorporation and to provide a recommendation to the Town Board and Town residents regarding incorporation of the Town. The Town Chairman appointed seven (7) members to the committee, four (4) from the west side of Town and three (3) from the east side of Town. The west side members included Dick Jones, Joe Nemecek, Pam Seidl, and Jeff Renard, while the east side members included Martha Andrew, John Coughlin, and Tim Raddatz. The Committee members were introduced at the Annual Town Meeting held on April 15, 2014, and the first meeting was held on April 29, 2014.

Over the course of several months the Incorporation Review Ad Hoc Committee held ten (10) open meetings including two (2) public input sessions with one held on the west side and one held on the east side of Town. In addition, the Committee conducted the following review:

- Met with Wisconsin Department of Administration officials in Madison who oversee the incorporation process at the state level.
- Consulted with Town legal counsel to review incorporation law and procedures.
- Commissioned a study by an independent planning & development consultant to determine the sustainability and viability of the east side of Town.
- Interviewed Town/Village of Harrison Administrator on the recent incorporation effort in the Town and Village of Harrison.
- Reviewed past documentation regarding the incorporation attempt from the 1970s, an incorporation review that occurred in the 1990s, and the Town's Comprehensive Plan adopted in 1996 that calls for the eventual incorporation of the Town.

The Committee completed their study in October and submitted their findings to the Town Board at the November 10, 2014 Board meeting. The positive and negative attributes of incorporation as determined by the Incorporation Review Ad Hoc Committee are as follows:

Positive attributes:

- Protection of municipal borders from future annexation by the Cities of Menasha, Appleton, and Neenah; and in turn the ability to annex territory.
- Protection from extra-territorial jurisdiction by the Cities of Menasha, Appleton, and Neenah; and in turn the ability to have extra-territorial jurisdiction.
- Village would gain full zoning authority to include shoreland zoning (presently the Town must abide by Winnebago County zoning regulations for shoreland zoning).
- Village would have full subdivision autonomy with no oversight from Winnebago County or other cities.
- Potential for improved bond rating for borrowing purposes (as a township in the State of Wisconsin the Town of Menasha's bond rating is presently as high as it can be due to the possibility of being annexed and losing assessed valuation).
- Ability to have a new name and identity to differentiate from the City of Menasha.

Negative attributes:

- The entire Town cannot incorporate at one time—the west side of Town would have to initiate and complete the incorporation process first, and then annex or attach the remaining east side of Town at a later date.
- Cost of incorporation—the application fee with the Department of Administration is \$25,000. Other costs include engineering, surveying, planning/consulting, publishing, and legal fees. In total the Town has \$80,000 budgeted in 2015 for incorporation costs.
- Potential mailing address change—while the new village would not be required to change mailing addresses the village could petition the United States Post Office for a change if desired.

Ultimately, the Committee decided by a unanimous 7-0 vote to recommend that the Town should move forward with an incorporation effort with the west side of the Town conducting the initial incorporation and the east side being either annexed or attached to the new village at a later date.

Unfortunately for the Town, the Committee determined that the Wisconsin Department of Administration would not approve an application for incorporation of the entire Town of Menasha at one time due to the pockets or islands of the Town that currently exist on the east side of Town within the Cities of Menasha and Appleton. State statutes require an incorporating entity to be “compact and homogeneous”. The Department of Administration stated that the east side of Town is not compact and homogeneous and therefore does not meet the requirements for incorporation.

Current Incorporation Petition Effort

In response to the recommendation of the Incorporation Review Ad Hoc Committee, a group of petitioners opted to move forward with initiating the incorporation process and published their notice of intent to circulate a petition to incorporate the west side of Town into the Village of Fox Crossing. The petitioners have indicated that they would like to incorporate the west side of Town and then reunite the new village with the remaining Town on the east side through the annexation process or attachment process at a later date. While the petitioners need 50 signatures for a valid petition, they have indicated that as of March 2, 2015 they already have over 200 signatures.

Next Steps

As of March 2, 2015 the incorporation petition remains open and is being circulated, and according to the petitioners, they plan to submit the petition to the Winnebago County Circuit Court during either March or April 2015. After a review by a Circuit Court judge, the petition would be sent to the Wisconsin Department of Administration to be reviewed by a special committee for a period of 180 days. Should the Department of Administration approve the petition then it returns to the Winnebago County Circuit Court for the judge to set a date for a referendum vote. Finally, a referendum is held with the electors in the incorporating area (west side of Town) participating in the vote. Should a majority vote in favor of the incorporation then the incorporation is completed. The incorporation process is lengthy with the current effort not likely to be resolved until spring or summer of 2016.

Dissemination of Information Regarding Incorporation

In response to the findings of the Incorporation Review Ad Hoc Committee the Town Board of Supervisors directed Town staff to disseminate information regarding the findings of the Committee to all Town of Menasha residents and businesses. Enclosed with this memo is a Frequently Asked Questions (FAQ) section that contains additional information regarding the Committee’s findings and recommendation.

Questions and Comments

Any questions or comments can be directed to the following:

E-mail:	info@town-menasha.com
Website comment:	www.town-menasha.com/contact/
24-hour phone line (please leave message):	(920) 720-7135

**INCORPORATION REVIEW AD HOC COMMITTEE RECOMMENDATION REPORT
TO THE TOWN OF MENASHA BOARD OF SUPERVISORS
MONDAY, NOVEMBER 10, 2014**

First of all, thank you for giving us the opportunity this evening to present our final recommendation to you. Please allow us to make our recommendation and then we will take questions.

The committee was established by the board on 1/27/14 and the members introduced at the April Annual Town Meeting. Our charge was to review the pros and cons of incorporation and report back to the town board. This is our report.

We have held 10 open meetings, including 2 well attended public input meetings, one on the east side, one on the west side. In addition, various committee members have traveled to Madison to meet face to face with Department of Administration, met with Don Merkes, mayor of the City of Menasha, met with Travis Parrish, Village of Harrison administrator, hired and reviewed the report of William Forrest, consultant who studied the sustainability and viability of the east side, and finally, reviewed the documentation from the town's 1979 failed attempt at incorporation.

Some of the pros to incorporation include the following:

1. Protection of borders from annexation by neighboring incorporated municipalities, (i.e., Appleton, Neenah, Menasha). Losing property to annexation erodes our tax base which can lead to reduced services, higher tax rates, lower bond ratings. Obviously, this puts a heavier tax burden on remaining town residents and businesses. Securing borders is probably the major reason to support incorporation.

It has been suggested that we can protect our borders by extending the current border agreements with Appleton and Menasha. We have none with Neenah. Why would a city enter into a border agreement with a town? They do not have to. Neenah didn't. They would do so only if they receive something of value in return, such as growth area expansion, even cash (Town of Somers paid City of Kenosha \$5-6 million for its border agreement). How do you make up the cost in lost property valuation and tax revenue? You raise taxes and/or reduce services.

Even with our existing border agreements, since 2009 the town has lost 21 parcels, a total of 19.11 acres, with a total value of \$1,108,400. The border agreements give the cities of Appleton and Menasha certain areas which they are allowed to annex from the town.

The (attached) map shows the City of Appleton and City of Menasha growth areas. It reflects our border agreements and shows the vulnerability of the east side. When the boundary agreement with the City of Menasha terminates in just four (4) years from now on Nov 2, 2018, all bets are off. Recognizing their financial condition, you can bet that they will aggressively pursue annexation of town property. Nobody in the town wants to pay City of Menasha taxes. Their equalized tax rate paid in 2014 was \$10.55. Ours was \$5.65. (City of Neenah was \$9.27, Appleton \$8.48.)

We can secure those borders by following the Department of Administration's recommendation of incorporating the west side first and then bringing in the east side.

Other pros include:

2. The newly incorporated municipality will actually gain annexation authority as I just described.

3. It will have extra-territorial authority which affects planning, zoning, & platting. Cities may review, approve, or reject subdivision plats within 3 miles of their borders, villages within 1-1/2 miles of their borders. As we currently are a township, our neighboring cities have that authority over us.

4. We would have complete zoning authority including shoreland zoning.

5. We would have subdivision autonomy with no oversight from counties or cities.

6. We would potentially improve our bond rating (AA2) because we secured our borders and maintained our tax base.

7. We would have a new name that would differentiate us from the City of Menasha. That confusion has made it somewhat more difficult to obtain financing. Recently, we've had to go through the state trust fund loan process rather than open markets.

There are some cons to the process:

1. Cost. Application fee is \$25,000. Legal fees are another. Village of Somers spent about \$105,000. Town of Menasha has budgeted \$85,000 and has spent about \$5,000 so far. The application fee is included in those numbers.

2. Timing. At our meeting with the Department of Administration in Madison they stated strongly that the incorporation of the entire town at once would not be approved. The town's failed attempt at incorporation in 1979 was denied when they went for all or nothing. The Department of Administration said "don't try that again". They said that they could support incorporating the west side because of its homogeneity and compactness, and then having the new village/city annex or attach the east side. This process prolongs bringing the entire town into the newly created municipality, perhaps a year or more.

3. Potential address/zip code changes associated with change from town to newly named village/city.

Now, for the initial application, only the residents applying for incorporation on the west side would vote. Subsequently, the east side would vote to be annexed/attached into the new village/city.

We have some hoops to go through to accomplish the objective. When time comes to act, it will be up to all to have elected officials that share the view and intention to remain as one, strong, vibrant community.

The Town of Menasha is the second largest town in the state of Wisconsin with a tax base and economic output larger than many already incorporated communities. We already provide services to other municipalities and we provide all of the services required to incorporate. We are located in one of the fastest growing regions in the state and it's time we step up and control our own destiny. In our rapidly changing local and state economy, doing nothing does not mean things will stay the same. We are a very attractive annexation target for our neighbors, all of which are aggressively looking to increase their tax base.

Our committee has seven members, 3 from the east side, 4 from the west side. By unanimous vote, we recommend the following:

We believe the intention should be to incorporate the entire town at one time. However, to be successful, the process requires that we incorporate the west side first and then annex/attach the east side. The villages of Harrison and Bristol were both successful following this pattern this year.

We recommend the process begin as soon as possible. Time is on our side with the recent Harrison and Bristol decisions and also with the 41/10/441 project just beginning.

We strongly recommend that town staff begin a town-wide education-based communication plan to fully inform all town residents of the pros and cons of this process, what it will mean for the town, what the process entails, etc. Some of the residents we have spoken to did not know the difference between a town and a village or city. One man I spoke to thought a town had more powers than a village. He thought a village was just a designation for small hamlets. As a committee we have learned much going through this effort. Incorporation is not an easy concept to grasp. It requires a process that includes several technical and legal decisions.

We do not recommend holding a town-wide referendum on this issue because only the west side has the authority to vote on the initial application. The east side then has it in their power to authorize joining back up through the annexation/attachment process.

Finally, I have been a proud resident of the Town of Menasha for 14 years and have always thought that the town boards under Chairmen Tews and Youngquist have consistently made the right decisions for the benefit of the residents. We expect no less from you as you evaluate incorporation. We, as a committee, feel that we have studied the matter thoroughly and encourage you to move quickly and positively on our recommendation.

Thank you. We would be happy to take any questions.

Dick Jones (Chairman)

Martha Andrew

Tim Raddatz

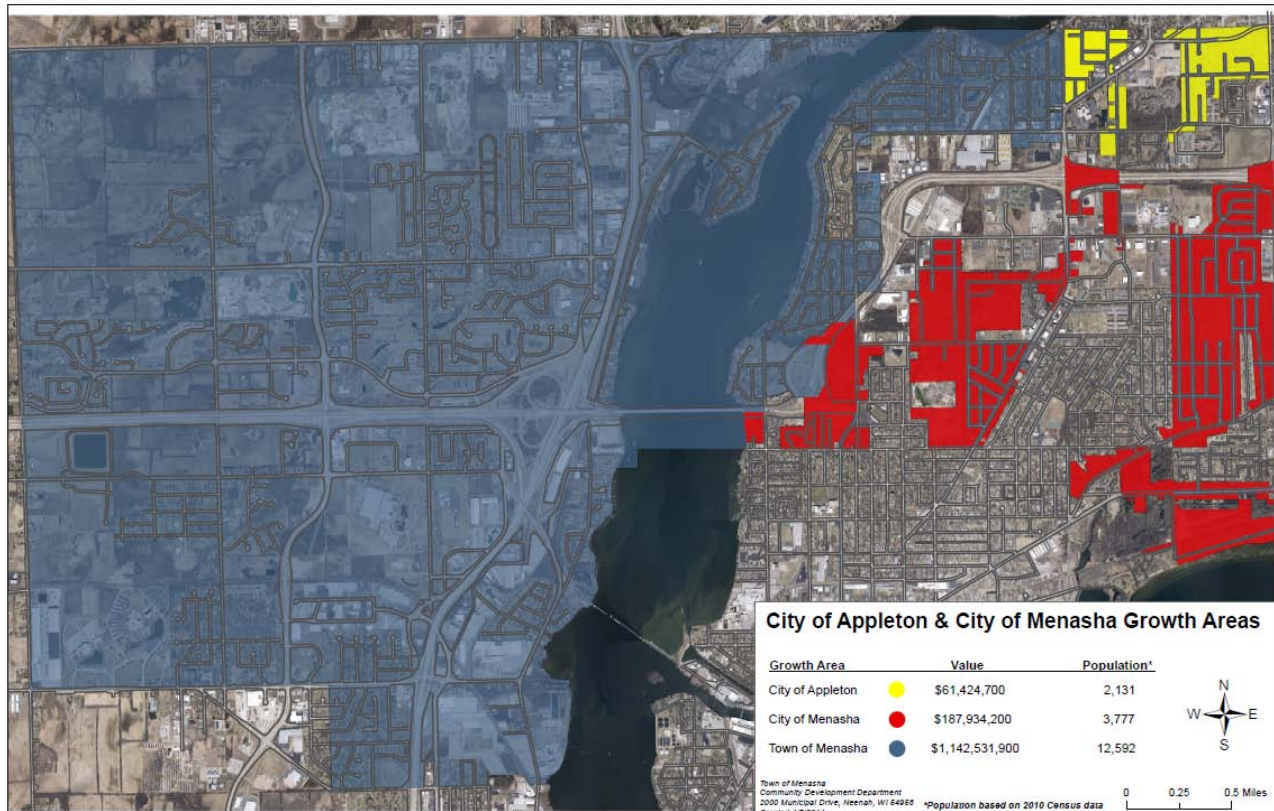
John Coughlin

Joe Nemecek (Vice Chair)

Jeff Renard

Pam Seidl (Secretary)

Map - City of Appleton and City of Menasha Growth Areas



Frequently Asked Questions

1. What is incorporation?

Incorporation is the process of creating new villages or cities from townships. While cities, villages, and towns are all forms of local government within the State of Wisconsin, the State Legislature grants cities the largest number of municipal powers and towns with the most limited number of municipal powers.

2. Why would the Town of Menasha want to incorporate into a village?

The primary reason to incorporate into a village is to protect the municipal borders from annexation by the Cities of Menasha, Appleton, and Neenah. Presently, the Town's tax base can be eroded through annexations; however, once incorporated, the newly incorporated village's lands would no longer be subject to annexation. Additional benefits include additional zoning authority, extra-territorial authority, subdivision autonomy, and community identity, amongst others.

3. What are the primary concerns should the Town of Menasha want to incorporate into a village?

The primary concern with incorporation for the Town of Menasha resides in the Wisconsin Department of Administration's determination that the entire Town of Menasha cannot incorporate at one time. In order for the Town to incorporate, the west side of Town would have to initiate an incorporation petition first and then complete the incorporation process. After the west side was incorporated then the east side could reunite with the west side through either the annexation or attachment process (which is not regulated by the Department of Administration). In other words, there would be a period of time in which the west side and the east side would be separate municipal entities. In addition, the incorporation of the Town of Menasha could lead to litigation with adjacent cities who may be opposed to the incorporation.

4. Why can't the entire Town of Menasha incorporate into a village at one time?

Wisconsin Department of Administration officials have stated that they would not approve an application for incorporation of the entire Town of Menasha at one time due to the pockets or islands on the east side of Town that currently exist within the Cities of Menasha and Appleton. State statutes require an incorporating entity to be "compact and homogeneous". The Department of Administration has stated that the east side of Town is not compact and homogeneous and therefore does not meet the requirements for incorporation.

5. If the west side of Town incorporates into a village, will the east side of Town be immediately absorbed into the City of Menasha or the City of Appleton?

No. If the west side of Town incorporates then the east side of Town will remain the Town of Menasha. The plan proposed by the Incorporation Review Ad Hoc Committee suggests that the west side of the Town should incorporate first, and then reunite with the east side of Town through annexation or through the attachment process with a border agreement. However, as long as the east side remains a Town it will be subject to annexation by the City of Menasha or the City of Appleton until such time as the east side combines with the newly incorporated west side.

6. What was the purpose of the Town of Menasha Incorporation Review Ad Hoc Committee?

The Town of Menasha Board of Supervisors established the Town of Menasha Incorporation Review Ad Hoc Committee to review the positive and negative attributes of incorporation, and to

provide a recommendation to the Town Board and Town residents regarding whether or not the Town should move forward with an incorporation effort. The Town Chairman appointed four (4) members from the west side of Town, and three (3) members from the east side of Town.

7. When was the Incorporation Review Ad Hoc Committee formed and who was seated on the Committee?

The Town Board of Supervisors created the committee in January 2014 with the Town Chairman appointing four (4) members from the west side of Town, and three (3) members from the east side of Town. The west side members included Dick Jones, Joe Nemecek, Pam Seidl, and Jeff Renard, while the east side members included Martha Andrew, John Coughlin, and Tim Raddatz.

8. How often did the Incorporation Review Ad Hoc Committee meet?

The Committee held ten (10) open meetings with the first meeting held on April 29, 2014 and their final meeting held on October 22, 2014. The Committee presented their findings at the November 10, 2014 Town Board meeting. The meeting agendas and minutes for the Committee can be found on the Town website at www.town-menasha.com/incorporation-information.

9. What were the findings of the Incorporation Review Ad Hoc Committee?

The Incorporation Review Committee submitted a list of the positive and negative attributes of incorporation for the Town of Menasha, and ultimately recommended, by a unanimous 7-0 vote, that the west side of the Town should conduct the initial incorporation with the east side being either annexed or attached to the new village at a later date. Their findings can be found on the Town website at www.town-menasha.com/incorporation-information.

10. Will my taxes increase because of incorporation?

No, taxes will not increase because of incorporation. Tax rates are established based upon the service level requested by the Town residents, and the assessed valuation of the Town. The Town presently maintains a service level necessary for incorporation; hence, no additional services will be required because of incorporation.

11. If incorporation occurs, who will provide municipal services for the residents and businesses residing in the new village and the remaining Town?

Upon incorporation the new village and the remaining Town will continue all municipal services as if no change had occurred. Eventually a new village Board and new Town Board will be elected to govern the municipalities and will need to decide how to provide municipal services into the future. The recommendation of the Incorporation Review Ad Hoc Committee is for both the new village Board and new Town Board to enter into an intergovernmental agreement to provide joint services to continue the present service levels to both the new village and the remaining Town until such time as the new village and remaining Town can reunite through the annexation or attachment process.

12. Is it true that the new village would be required to build a library, a swimming pool, and provide for a full-time Fire Department?

No, the Town of Menasha already maintains a service level necessary for incorporation—a library and swimming pool would not be required to be built, nor would the Town be required to operate a full-time Fire Department.

13. Will the new village be required to replace the current garbage and recycling carts that have the Town of Menasha name and logo printed on them?

No, the village would not be required to replace the current garbage and recycling carts—the current carts could be utilized until their end of life.

14. If the Town incorporates into a village will my mailing address change?

No, upon incorporation there would be no change to any mailing addresses—all residents and businesses would maintain their current Neenah 54956, Menasha 54952, Appleton 54914, or Appleton 54915 mailing addresses. In the future, the new village could review options of changing mailing addresses if desired, but it is the United States Post Office’s preference to not change mailing addresses due to the incorporation.

15. If the Town incorporates into a village will a new school district be required to be formed to serve the residents of the village?

No, a new school district would not be required to be formed—the current school district boundaries would remain in place.

16. Does the Town of Menasha have funds budgeted for the incorporation process?

Yes, in 2015 the Town of Menasha has \$80,000 budgeted for the incorporation process. These funds include monies for legal, engineering, consulting, and publishing fees, along with \$25,000 for the application fee paid to the Wisconsin Department of Administration. In 2014 the Town budgeted \$85,000 and spent approximately \$5,000 on engineering, surveying, and consultant fees. The remaining \$80,000 from the 2014 budget was rolled into the 2015 budget.

17. What are the approximate costs for the incorporation process?

Approximate costs for the incorporation process include the following:

- \$25,000 application fee to the Department of Administration
- \$10,000 estimate for planning and development consultant fees
- \$10,000 estimate for engineering and surveying fees
- \$ 5,000 estimate for legal notices and publication fees

In addition, there may be legal fees and court costs depending upon whether or not other municipalities choose to challenge the incorporation effort. The Town of Menasha currently has \$35,000 budgeted for legal fees if necessary.

18. What are some of the potential future costs that may result from the incorporation of the Town of Menasha?

Some future costs of the incorporation may potentially include the following (spread out over a course of years):

- \$10,000 estimate for road sign, and vehicle decal changes
- \$10,000 estimate for Town staff, Police, and Fire Department uniform and badge changes
- \$10,000 estimate for additional auditing services
- \$45,000 estimate for village board member stipends (7 members)

19. What is the incorporation process?

The incorporation process is not initiated or controlled by the Town Board, rather, the process is initiated by two “electors and freeholders” that reside in the proposed incorporating area. A

“freeholder” is an individual who not only lives in the incorporating area but owns his or her home as well. The process for incorporation is as follows:

1. Two electors and freeholders must publish in the newspaper a notice of their intent to circulate a petition for incorporation.
2. The electors and freeholders must circulate a petition seeking incorporation and receive at least fifty (50) signatures from other electors and freeholders that reside in the incorporating area.
3. The petitioners submit the petition to the County Circuit Court where a judge reviews the application and ensures the initial standards for incorporation are met.
4. Official notices are sent to all adjacent communities notifying them of the proposed petition for incorporation.
5. Once the circuit court judge certifies the application it is sent to the Wisconsin Department of Administration (DOA) for review—at this point a \$25,000 application filing fee must be made before the DOA moves forward with the review.
6. At the Department of Administration a board known as the Incorporation Review Board has 180 days in which to review the application to determine if the requirements for incorporation as set forth in Wisconsin Statute 66.0207 have been met.
7. Should the Incorporation Review Board find that the requirements have been met the application goes back to the circuit court judge who sets a date for an incorporation referendum.
8. A referendum is held with all electors residing in the incorporating area having the opportunity to vote on the incorporation.
9. The incorporation is approved with a majority vote, and the Clerk of Courts forwards an incorporation certification to the Office of the Secretary of State.

A copy of a flow chart of the incorporation process can be found at the following web address: www.town-menasha.com/incorporation-information.

20. Will there be a referendum on the incorporation petition?

Yes, a referendum is a requirement in the incorporation process; however, only electors residing in the incorporating area will have the opportunity to vote in the initial incorporation vote. Hence, in the current incorporation effort only electors residing on the west side of Town will vote in the referendum. Electors on the east side of Town would have an opportunity to vote at the time the remaining Town reunited with the new village through the annexation or attachment process.

21. How far along the incorporation process is the current incorporation petition effort?

As of March 2, 2015 the current incorporation effort is in the petition circulation phase. The notice of intent to circulate the petition was published on December 16, 2014. The incorporation petitioners have stated that they plan on holding open the petition for signatures until sometime during March or April at which point they plan to submit the petition to the Winnebago County Circuit Court. The petitioners have stated that they have already in excess of 200 signatures for the petition—a minimum of 50 signatures is required for submission to the Court.

22. What is the chosen name of the proposed incorporated village?

The petitioners have selected the name Fox Crossing as the name for the proposed new village.

23. If the residents of the newly incorporated village do not like the name Village of Fox Crossing can the name be changed?

Yes, the name can be changed if the residents do not like the new name. The petitioners for incorporation have stated that while they selected and prefer the name the Village of Fox Crossing they understand if the residents would like a different name.

24. Did the Town of Menasha Board Supervisors initiate the incorporation petition?

No. Two Town of Menasha electors and freeholders initiated the incorporation petition. Wisconsin Statutes dictate that the incorporation process is a Town elector and freeholder initiated effort and works outside the jurisdiction of the Town Board of Supervisors—in other words, the Town Board does not have a vote or say in the matter.

25. What is the population and valuation of the west side of Town and the east side of Town?

Based on the 2014 census estimate the west side maintains a population of 10,649 while the east side holds a population of 7,851. In 2014, the equalized value of the west side is approximately \$979,541,900 while the approximate east side equalized value is \$412,621,900. A map indicating population and valuation by neighborhood can be found at the following web address: www.town-menasha.com/incorporation-information.

26. Does the Town of Menasha currently have border agreements with the Cities of Menasha, Appleton, and Neenah?

Yes, the Town of Menasha currently holds border agreements with the Cities of Menasha and Appleton. No, the Town presently does not have a border agreement with the City of Neenah. The City of Menasha border agreement expires November 2, 2018, and the City of Appleton agreement expires May 20, 2029. A copy of the border agreements can be found at the following web address: www.town-menasha.com/incorporation-information.

27. What Wisconsin Statute regulates standards that must be applied by the Department of Administration when reviewing an incorporation petition?

Wisconsin Statute 66.0207 dictates the standards the Department of Administration must apply when reviewing an incorporation application. A copy of Statute 66.0207 can be found at the following website: www.town-menasha.com/incorporation-information.

28. Where can I go to find additional information regarding incorporation?

The following website contains a compilation of information gathered by the Incorporation Review Ad Hoc Committee which includes maps, charts, contact information, border agreements, and other reference materials: www.town-menasha.com/incorporation-information.

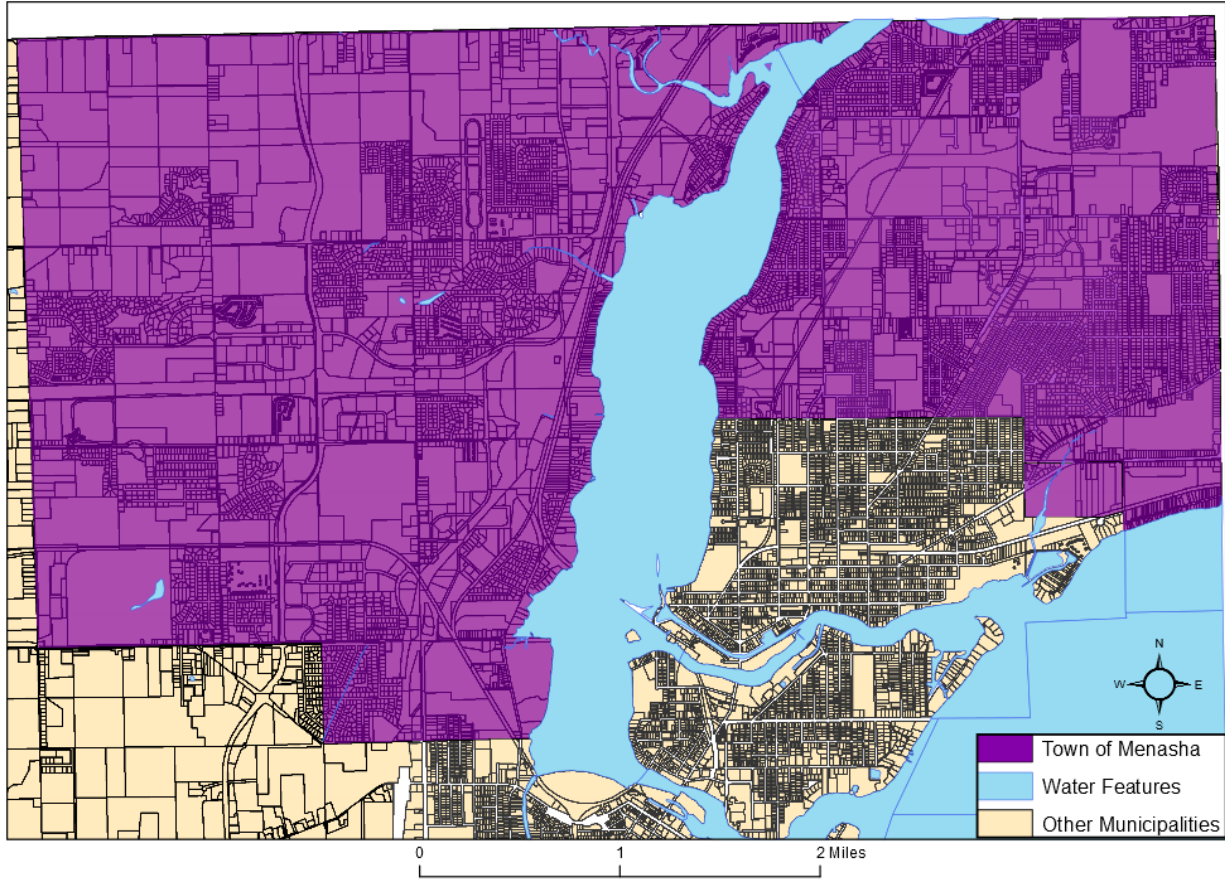
In addition, the Wisconsin Department of Administration hosts a website containing information on incorporations: doa.wi.gov/Divisions/Intergovernmental-Relations/Municipal-Boundary-Review.

29. Who can I contact if I have a question or comment regarding the current incorporation effort?

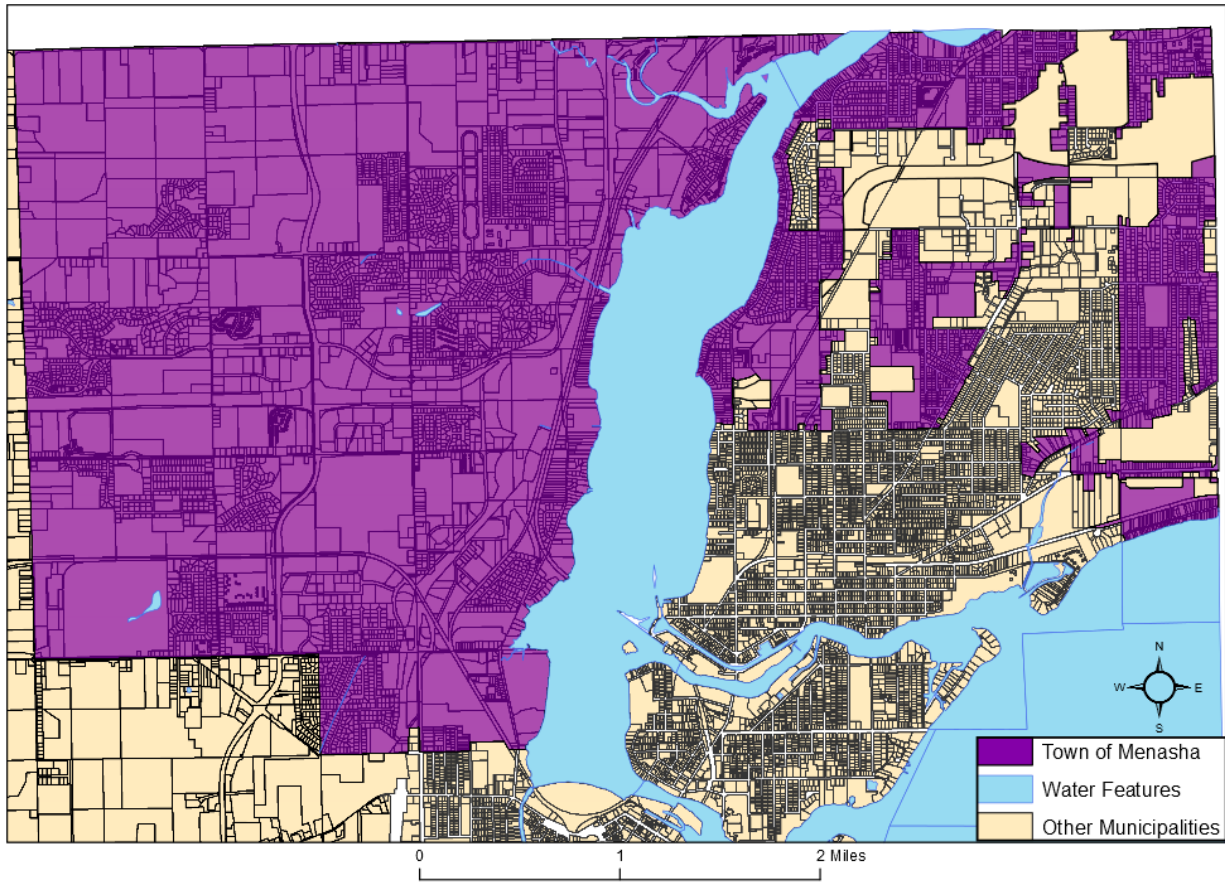
Any questions or comments can be directed to the following:

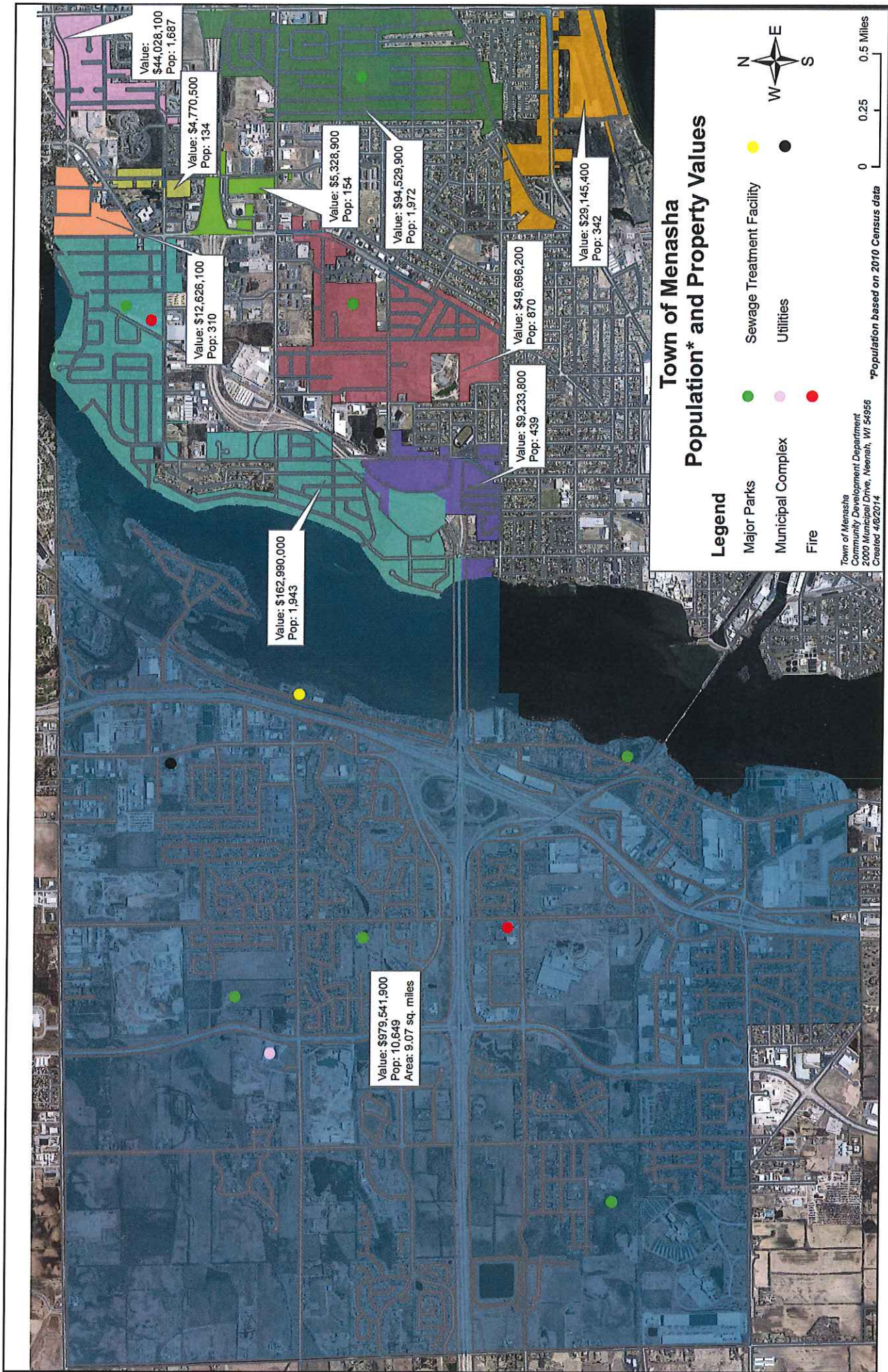
E-mail:	info@town-menasha.com
Website comment:	www.town-menasha.com/contact/
24 hour phone line (please leave message):	(920) 720-7135

Town of Menasha 1951 Boundary



Town of Menasha 2015 Boundary







Town of Menasha
2000 Municipal Drive
Neenah, WI 54956-5663

Bulk
Stamp

Imprint
Resident
Mailing Address
City, State Zip



Town of Menasha
INCORPORATION
Information