

# ACTIVITY & RESOURCE GUIDE



**FALL 2011 / WINTER 2012**



## **PARKS & RECREATION STAFF**

Michael T. Kading - Director of Parks & Recreation  
Amanda Geiser - Recreation Supervisor  
Lori Walbrun - Customer Service Assistant  
Kelly Christman - Customer Service Assistant  
Randy Mahn - Park Laborer  
Ed Tauscher - Park Laborer  
Vacant - Park Foreman

## **PARKS & RECREATION COMMISSION**

Michael Lynch - Commissioner  
Randy Meyer - Commissioner  
Steve Otto - Commissioner  
Clarence Peterson - Commissioner  
Debbie Swiertz - Chairperson  
Paul Vandenberg - Commissioner  
Gerald Voigt - Commissioner

## **MAIN OFFICE INFORMATION**

2000 Municipal Drive - Neenah, WI 54956  
Phone: (920) 720-7108  
E-mail: parkrec@town-menasha.com  
Office Hours: 8:00AM - 4:30PM Monday - Friday

## **COMMUNITY CENTER ADDRESS**

1000 Valley Road - Menasha, WI 54952

## **PROGRAM INFORMATION LINE**

For program cancellation information call 720-7139

## **REGISTRATION INFORMATION**

**Resident** Registration Begins **August 15**

**Non-Resident** Registration Begins **August 22**

**Registration Deadlines:** Enroll Early! At some point we must decide whether or not to cancel a program due to low enrollment. After the registration deadline, please call for class availability.

**Walk-In/Drop-Off Registration:** Walk in your registration form and payment (cash or check) to the parks and recreation office or drop off your completed form and payment in the deposit box located outside of the Municipal Complex Main Entrance.

**Mail-In Registration:** Mail your completed registration form and payment to the parks and recreation office.

**Online Registration:** Register for programs online 24/7! Call the parks and recreation office for log-in information.

### **\*\*Please Note:**

- We cannot process credit/debit card transactions in the office. You may use your credit/debit card online only.
- Registrations are not accepted at the Community Center.

## **INSIDE THE FALL/WINTER ISSUE...**

### **PAGE**

- 2 DEPARTMENT INFORMATION**
- 3 NEWS FROM THE COMMUNITY**
- 4 FACILITY RENTAL INFORMATION**
- 5 SPECIAL EVENTS**
- 6 YOUTH PROGRAMS**
- 7 YOUTH PROGRAMS**
- 8 YOUTH PROGRAMS**
- 9 YOUTH PROGRAMS**
- 10 YOUTH PROGRAMS**
- 11 YOUTH PROGRAMS / ADULT PROGRAMS**
- 12 ADULT PROGRAMS**
- 13 ADULT PROGRAMS**
- 14 RECREATION PROGRAM POLICIES**
- 15 PROGRAM REGISTRATION FORM**
- 16 CONTACT INFO / ROUND-UP SPONSORS**



**FIND US ON FACEBOOK!**

**POPULAR!**

**PROGRAM FILLS UP QUICKLY  
- DON'T WAIT TO REGISTER**

### **PROGRAM CONFIRMATION / RECEIPT POLICY**



As a cost saving measure, the parks & recreation department will not mail receipts to those who sign up for recreation programs. If you include your e-mail address on the registration form, we will e-mail you a copy of the receipt. Or, if you would like a receipt mailed to you, please include a self-addressed, stamped envelope with your registration form.

## BECOME A VOLUNTEER HELP US PLANT TREES!

If you are looking for a great way to volunteer your time and help out your community, give us a call! We are looking for volunteers to help plant trees along our trails and in the parks on Saturday, September 17. If interested, please give our office a call and ask for Lori.



### SPONSORSHIP OPPORTUNITIES

Do you own a local business and are you interested in helping support the Town of Menasha Parks & Recreation Department? We have numerous programs and events available for sponsorship. There are many benefits available to your business while partnering with our department. If you are interested in becoming a sponsor and would like additional information, please contact Amanda at 720-7108 or [ageiser@town-menasha.com](mailto:ageiser@town-menasha.com).

#### Sponsorship Opportunities Include:

- Family Entertainment Series
- Picnic Lunch - Entertainment at the Park
- Summer Playground Program T-Shirts
- Special Events
- Summer Health and Fitness Challenge

## TOWN OF MENASHA FIRE DEPARTMENT 2011 SAFETY DAY



Bring your family and friends to enjoy safety displays and activities for all ages. Is your car seat installed correctly? Bring it in for a free inspection. Learn about fireplace safety, candle safety, dryer safety, and identification protection, to name a few. Attendees will also be able to watch a live chimney fire demonstration and learn how to maintain your chimney. We will have a 9-11 memorial to commemorate the 10<sup>th</sup> Anniversary of September 11.

Come and learn about fire and life safety while the entire family has fun participating in the activities and viewing the displays!

Food proceeds will support the Public Education Program and the Camp for Burn Injured Youth. For more information contact the fire department at 720-7125 or visit us on Facebook!

**Saturday - September 10**  
**10:00AM-2:00PM**  
**Station 40 (1326 Cold Spring Rd., Neenah)**



### PROGRAM INFORMATION LINE

It's raining outside today, there's a bad snowstorm happening, does my child have class? If this is a question you might be asking yourself on the day your child is supposed to attend a recreation class, please call our program information line. You can find out cancellation information by simply calling **720-7139**. We will not make phone calls if class is canceled due to inclement weather.

## HO! HO! HO! HERE COMES SANTA

Town of Menasha Employees, along with contributions from residents and local businesses, present the annual Santa Float. Starting on Monday, December 5 through Friday, December 9, Santa will be in the neighborhoods below between the times of 5:30PM-8:00PM.

#### THE ROUTES ARE AS FOLLOWS:

**MONDAY, DECEMBER 5:** the area of town WEST of Little Lake Butte des Morts, SOUTH of STH "10", WEST of STH "41".

**TUESDAY, DECEMBER 6:** the area of town WEST of Little Lake Butte des Morts, NORTH of STH "10", WEST of STH "41".

**WEDNESDAY, DECEMBER 7:** the area of town WEST of Little Lake Butte des Morts, EAST of STH "41".

**THURSDAY, DECEMBER 8:** the area of town EAST of Little Lake Butte des Morts, EAST of STH "47", including EARL Street, FATIMA Street, TERRACE Avenue and MAYER Street area NEIGHBORHOODS.

**FRIDAY, DECEMBER 9:** the area of town EAST of Little Lake Butte des Morts, WEST of STH "47".

Santa advised us that due to some restrictions and the size of his sleigh, he will not be able to go down streets that have turnarounds or dead ends. Keep your eyes and ears open and when you hear Santa in your area, come out and enjoy the Spirit of Christmas!

The Santa Float is funded entirely through donations. Anyone who is interested in donating to this great event can drop off or send donations to:

Town of Menasha Municipal Complex  
2000 Municipal Drive - Neenah WI 54956

**THESE ARE TENTATIVE ROUTES AND  
MAY BE ADJUSTED DUE TO  
INCLEMENT WEATHER.**



### OUTDOOR WINTER ACTIVITIES

Are you looking for a place to go ice skating or sledding this winter? The Town of Menasha has one ice rink located in Fritsch Park (1651 Sandys Ln., Menasha). We may also open up an ice rink at Fritse Park (899 N. Lake St., Neenah). Please call the office for more information.

There are also three sledding hills, each located in Fritse Park (899 N. Lake St., Neenah), O'Hauser Park North (1986 O'Leary Rd., Neenah), and Fritsch Park (1651 Sandys Ln., Menasha).

### PART-TIME JOB OPPORTUNITIES

The parks and recreation department will be looking for various part-time and seasonal employees as well as specialty instructors for the next spring and summer seasons. Positions may include: Youth Sports Instructors, Playground Leaders and Seasonal Mowers. Call the department to find out which job opportunities may be available.



## COMMUNITY CENTER RENTAL INFORMATION

This is the perfect place to hold your next party or meeting. Whether it is a bridal or baby shower, birthday party, family reunion, or business meeting, the Community Center provides you with a clean facility and friendly accommodations. This is a smoke and alcohol-free facility. The Community Center is available for rent between the hours of 7:30AM-10:00PM. A \$50 reservation/security deposit is required (per room) for all rentals. To view pictures of the Community Center please visit our website.



### ROOMS AVAILABLE

**Maple Room** will hold approximately 60 people seated at tables. For an additional fee, the kitchen equipment (refrigerator, stove, microwave, and sink) may be rented.

Resident Fees

\*With Kitchen \$65 / 5 Hours \$120 / Full Day  
 \*Without Kitchen \$45 / 5 Hours \$80 / Full Day

Non-Resident Fees

\*With Kitchen \$81 / 5 Hours \$150 / Full Day  
 \*Without Kitchen \$56 / 5 Hours \$100 / Full Day

**Robin Room** will hold approximately 55 people seated at tables.

Resident Fees

\*\$45 / 5 Hours \$80 / Full Day

Non-Resident Fees

\*\$56 / 5 Hours \$100 / Full Day

**Badger Room** will hold approximately 20 people seated at tables. This room is more suitable for meetings or small gatherings.

Resident Fees

\*\$30 / 5 Hours \$50 / Full Day

Non-Resident Fees

\*\$38 / 5 Hours \$62 / Full Day

**Maple & Robin Room** together will hold approximately 120 people seated at tables. Kitchen equipment (refrigerator, stove, microwave, and sink) is included in the rental fee.

Resident Fees

\*\$100 / 5 Hours \$190 / Full Day

Non-Resident Fees

\*\$125 / 5 Hours \$237 / Full Day

**\*Rental Rates Subject To Change**

**\*Identification Required To Receive Resident Rate**



## PARK PAVILION RENTAL INFORMATION

Don't wait until the last minute, book your 2012 summer party today! Dates fill up fast for graduation parties, family reunions, etc.

Park pavilions are available for rent from the first weekend in May through the last weekend in September. All pavilions have electrical outlets available for use during your rental. Kitchen rentals are an additional fee (not available at Wittmann Park). Kitchen rentals include a stove, refrigerator, sink and serving area.

Parks that have pavilions available for rent include: Fritsch, Schildt, O'Hauser North, O'Hauser South, Palisades, and Wittmann. All pavilions with the exception of Wittmann Park hold approximately 100-200 people. Wittmann Park holds between 1-75 people. To view pictures of the park pavilions please visit our website.



**\*Rental Rates Subject To Change**

**\*Identification Required To Receive Resident Rate**

Facility	Guests	Residency Status	Base Fee	Damage Deposit	Kitchen Fee
Fritsch, O'Hauser North, O'Hauser South, Palisades, Schildt	1-125	Resident	\$55	\$50	\$35
		Non-Resident	\$70		
Fritsch, O'Hauser North, O'Hauser South, Palisades, Schildt	126 +	Resident	\$110	\$50	\$35
		Non-Resident	\$140		
Wittmann	1-75	Resident	\$35	\$50	N/A
		Non-Resident	\$45		



## KALAHARI RESORT WATERPARK TRIP

*(All ages, 11 & under must be accompanied by an adult)*

The kids are off of school, save gas money and join us as we enjoy America's Largest Indoor Waterpark! Kalahari offers something for everyone. Stand up surf or boogie board on the Flow Rider where 50,000 gallons of water each minute flow under you to create a five-foot ocean like wave. Bring a friend and have a great time!

School bus to leave from the Municipal Complex (2000 Municipal Drive) at 8:15AM with arrival at the Kalahari at 11:00AM. A pizza lunch and soda is included. We will depart from the Kalahari at 5:30PM, stop at a fast food place on the way home, and arrive back at the Municipal Complex at 9:00PM.

*Note: Fee includes admission, lunch and bus transportation. Participants should bring money for dinner on the way home. We are allowed to store our clothes/coats, etc., in the mezzanine (not secured). Lockers are available for \$5, plus a \$5 deposit (\$10 up front, then \$5 is refunded). The Town of Menasha is not responsible for lost or stolen electronic devices.*

### Thursday – October 27

Departure 8:15AM / Return 9:00PM

Location: Kalahari Resort, Wisconsin Dells

Class # 303200-01

FEE: \$45

Registration Deadline, October 18



**POPULAR!**

## DADDY DAUGHTER WINTER FORMAL

*(Ages 5+)*

Girls, take dear ol' dad out for a special night of dinner and dancing. Fathers, create an evening that you and your daughter will cherish forever. This memorable night will consist of dinner and plenty of dancing. For an additional fee, a professional photographer will be on hand to capture your moment. Beverages (soda, juice) will also be available for a minimal fee. Don't miss out on this great event! Sign up early, spots fill up quickly.

### Friday – February 10

5:30-9:00PM

Location: The Grand Meridian (2621 N. Oneida St., Appleton)

FEE: \$33 (per couple)

Class # 412005-01

\$13 (each additional child)

Class # 412005-02

Registration Deadline, February 3



DADDY DAUGHTER WINTER FORMAL

## CERAMICS WORKSHOP

*(Ages 5-10)*

Let's paint a beautiful piece of pottery. Each workshop will center on a different holiday theme. Halloween – ghost bowl, Christmas – tree ornament, Valentine's Day – TBD. Participants will learn about ceramics and then get to paint their own piece of pottery. Our staff will then take the pottery to be glazed and fired. Participants will be able to pick up their finished product in the parks and recreation office 7 days after the workshop.

Tuesday – October 4

Class # 303000-04

Tuesday – November 29

Class # 303000-05

Tuesday – January 24

Class # 403000-06

5:30-6:15PM

Location: Community Center (1000 Valley Rd.)

FEE (R/NR): \$12 / \$15

Registration Deadline, two weeks prior to each class

## MORNING MOVIE BREAK

*(Ages 5-9)*

Kids join us for a relaxing morning movie break on your day off of school. We'll watch a movie (Despicable Me), eat popcorn, make a craft and play games, including BINGO!

### Friday – October 28

9:00AM-12:00PM

Location: Municipal Complex (2000 Municipal Dr.)

FEE (R/NR): \$6 / \$7

Class # 312000-07

Registration Deadline, October 21

**POPULAR!**

## BREAKFAST WITH SANTA

*(Youth ages 2-10 w/ parent or guardian)*

HO! HO! HO! Your way into a morning of holiday fun. You will get to enjoy breakfast, craft activities, cookie decorating, and a visit from Mr. Claus himself. Breakfast will include pancakes with strawberries and whip cream, sausages, cookies, juice and milk. Don't forget your camera – there will be photo opportunities with Santa available.

### Saturday – December 3

9:30-11:30AM – Breakfast will be served at 9:30 sharp!

Location: Community Center (1000 Valley Rd.)

FEE: \$4 per child

Class # 312000-03

\$5 per adult

Class # 312000-04

Registration Deadline, November 23

## HOLIDAY CANDY EXTRAVAGANZA

*(Ages 8+)*

Join us as we prepare for the holidays by making a variety treats, themed for the season. Goodies include chocolate covered pretzels, decorated cookies, and much more. Each child will receive a generous amount to take home and share with their family.

### Tuesday – December 6

5:00-6:00PM

Class # 312000-06

Location: Community Center (1000 Valley Rd.)

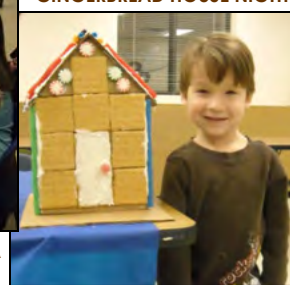
FEE (R/NR): \$10 / \$13

Registration Deadline, November 29



HOLIDAY CANDY EXTRAVAGANZA

### GINGERBREAD HOUSE NIGHT



## GINGERBREAD HOUSE NIGHT

*(Ages 4-8 w/ parent or guardian)*

What better way to get into the holiday spirit. Join us and use your creativity to make an eye-catching gingerbread house that your family will love! We will use a variety of edible materials that will put your imagination to the test.

### Wednesday – December 14

5:00-5:45PM

Class # 312000-05

Location: Community Center (1000 Valley Rd.)

FEE (R/NR): \$7 / \$9

Registration Deadline, December 7

## FLAG FOOTBALL – FALL 2011

(Grades K-6)

Flag football is a non-contact, fun and exciting sport for boys and girls. Players will learn basic football skills by participating in a variety of drills. This fall, we are offering three different age options to meet your flag football needs.

### INTRO TO FLAG FOOTBALL

(Grades K-1)

Basic skills and drills will be emphasized throughout this class. Using soft (Nerf) footballs, participants will be taught the basics of catching and throwing, while also learning running and defending techniques. All players will receive a long sleeve t-shirt. Adult volunteers would be greatly appreciated to help run drill stations and keep children organized; please contact us if you are interested.

#### Tuesdays / 4 Weeks

August 23 – September 13

4:30-5:00PM Class # 302000-13

Location: O'Hauser North Park (1986 O'Leary Rd.)

FEE (R/NR): \$14 / \$17

Registration Deadline, August 16 (early registration allowed)



### FLAG FOOTBALL LEAGUE

(Grades 2-3)

The first two classes will consist of learning the basics of football and game play. The remaining four classes will consist of practice time and then game-time. Players will be divided into teams prior to the first class (adjustments will be made based upon individuals skill level). Junior size footballs will be used and all players will receive a long sleeve t-shirt. Coaches will serve as quarterbacks for their respective teams. We are looking for adult volunteer coaches for each team; please contact us if you are interested. **\*Skills assessment and coaches orientation will take place on Saturday, August 20 from 8:00-9:30AM.**

#### Tuesdays / 6 Weeks

August 23 – September 27

4:45-5:45PM Class # 302000-12

Location: O'Hauser North Park (1986 O'Leary Rd.)

FEE (R/NR): \$18 / \$22

Registration Deadline, August 16 (early registration allowed)

### FLAG FOOTBALL LEAGUE

(Grades 4-6)

The first two classes will consist of learning the basics of football and game play. The remaining four classes will consist of practice time and then game-time. Players will be divided into teams prior to the first class (adjustments will be made based upon individual skill level). Junior size footballs will be used and all players will receive a long sleeve t-shirt. Players will serve as quarterbacks and coaches will assist with play calling. We are looking for adult volunteer coaches for each team; please contact us if you are interested. **\*Skills assessment and coaches orientation will take place on Saturday, August 20 from 9:30-11:00AM.**

#### Tuesdays / 6 Weeks

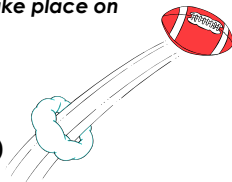
August 23 – September 27

5:15-6:30PM Class # 302000-11

Location: O'Hauser North Park (1986 O'Leary Rd.)

FEE (R/NR): \$21 / \$26

Registration Deadline, August 16 (early registration allowed)



## LITTLE KICKERS - INTRO SOCCER

(Ages 2-7)

Get a kick out of soccer! Come on out to the field and learn the basic fundamentals of soccer. This introductory class will teach soccer's basic skills, including passing, dribbling, shooting, and more, in a fun, non-competitive environment. There will not be organized games scheduled. The goal of this program is to promote participation along with skill development appropriate to each child's interest and ability level. Siblings are asked to sit off to the side.

#### Saturdays / 4 Weeks

September 10 – October 1

8:45-9:15AM

Parent/Child Ages 2-3

Class # 302000-06

9:30-10:00AM

Parent/Child Ages 2-3

Class # 302000-07

10:15-10:45AM

Parent/Child Ages 2-3

Class # 302000-08

11:00AM-11:30AM

Ages 4-7

Class # 302000-09

11:45-12:15PM

Ages 4-7

Class # 302000-10

Location: O'Hauser North Park (1986 O'Leary Rd.)

\*September 24 class will be held at Schildt Park (1780 Cold Spring Rd.)

FEE (R/NR): \$13 / \$16

Registration Deadline, September 2

POPULAR!

## TUMBLING TOTS

(Ages 2-6)

This program is designed to introduce children to basic tumbling skills and to encourage motor development and self-confidence. Movement activities will be emphasized and your child will receive the benefits of self-discipline and physical exercise. The parent/child class is designed to get children over fears and used to movement with parent involvement. Siblings are asked to wait in the lobby.

#### Fall Session - Tuesdays / 6 Weeks

September 13 – October 25 (No Class Oct. 11)

4:00-4:30PM

Ages 3 & 4

Class # 302000-01

4:35-5:05PM

Ages 5 & 6

Class # 302000-02

5:10-5:40PM

Parent/Child Ages 2-3

Class # 302000-03

#### Fall Session - Mondays / 6 Weeks

September 19 – October 24

10:00-10:30AM

Parent/Child Ages 2-3

Class # 302000-04

10:35-11:05AM

Ages 3-5

Class # 302000-05

#### Winter Session - Tuesdays / 6 Weeks

January 17 – February 28 (No Class Feb. 14)

4:00-4:30PM

Ages 3 & 4

Class # 402000-01

4:35-5:05PM

Ages 5 & 6

Class # 402000-02

5:10-5:40PM

Parent/Child Ages 2-3

Class # 402000-03

#### Winter Session - Mondays / 6 Weeks

January 23 – February 27

10:00-10:30AM

Parent/Child Ages 2-3

Class # 402000-04

10:35-11:05AM

Ages 3-5

Class # 402000-05

Location: Community Center (1000 Valley Rd.)

FEE (R/NR): \$18 / \$22

Registration Deadline, one week prior to the start of each class

POPULAR!



TUMBLING TOTS



FLAG FOOTBALL

**POPULAR!**

## MOVIN' WITH MUSIC

(Ages 3-6)

Get up and move! Your child will be energized throughout class as we'll hop, bop and dance our way through 45 minutes of fun. We will use a variety of props and move to the sound of everyone's favorite tunes. Your preschooler won't even realize they're developing important skills like hand-eye coordination, large muscle skills, and rhythm...all they'll know is they're having loads of fun.

### Fall Session - Wednesdays / 6 Weeks

September 21 – October 26

9:15-10:00AM Class # 301000-01

Location: Community Center (1000 Valley Rd.)

FEE (R/NR): \$21 / \$26

Registration Deadline, September 14

### Winter Session - Wednesdays / 6 Weeks

January 25 – February 29

9:15-10:00AM Class # 401001-01

Location: Community Center (1000 Valley Rd.)

FEE (R/NR): \$21 / \$26

Registration Deadline, January 18

## WIGGLES AND GIGGLES

(Ages 2-4 with Parent/Guardian)

Join us and have fun while we wiggle, giggle, learn and play! Children will dance and sing to songs while improving their large and small motor movements. We will also learn finger plays and experiment with various musical instruments. Objects such as scarves, hula hoops, balls, balloons, and other household objects will be used. Parent involvement is required, siblings are asked to wait in the lobby.

### Fall Session - Saturdays / 6 Weeks

October 15 – November 19

9:15-10:00AM Class # 301000-02

Location: Community Center (1000 Valley Rd.)

FEE (R/NR): \$21 / \$26

Registration Deadline, October 7

### Winter Session - Fridays / 6 Weeks

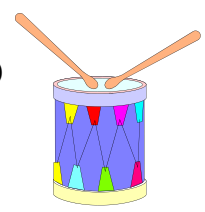
January 21 – February 25

9:15-10:00AM Class # 401001-02

Location: Community Center (1000 Valley Rd.)

FEE (R/NR): \$21 / \$26

Registration Deadline, January 13



## CRAFTY CREATIONS

(Ages 2-5 w/ parent or guardian)

This fun and exciting class will let your child explore their creativity and imagination. Every week participants will have fun learning how to make creative art projects using paint, glue, and other art media. Parents will assist their child in various aspects of the activity.

### Fall Session 1 - Wednesdays / 5 Weeks

September 28 – October 26

10:00-10:30AM Class # 302005-01

Location: Community Center (1000 Valley Rd.)

FEE (R/NR): \$20 / \$25

Registration Deadline, September 21

### Fall Session 2 - Wednesdays / 5 Weeks

November 9 - December 14 (No Class Nov. 23)

10:00-10:30AM Class # 302005-02

Location: Community Center (1000 Valley Rd.)

FEE (R/NR): \$20 / \$25

Registration Deadline, November 2

### Winter Session - Wednesdays / 5 Weeks

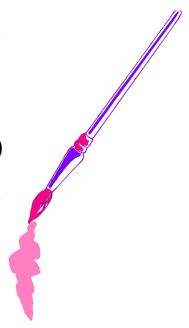
February 1 – February 29

10:00-10:30AM Class # 402005-01

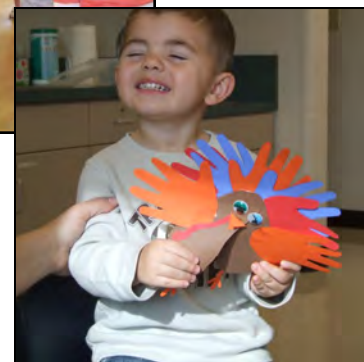
Location: Community Center (1000 Valley Rd.)

FEE (R/NR): \$20 / \$25

Registration Deadline, January 25



WIGGLES AND GIGGLES



CRAFTY CREATIONS

## FIT KIDS

(Ages 4-9)

Let's get up and move! This class is designed to help your child understand why it's important to exercise and stay fit. Participants will be doing basic movements to upbeat music while incorporating simple pieces of fitness equipment.

### Fall Session - Saturdays / 4 Weeks

September 10 - October 1

Ages 4-6 9:00-9:30AM Class # 304005-01

Ages 7-9 9:45-10:15AM Class # 304005-02

Location: UW Fox Valley Field House (1478 Midway Rd.)

FEE (R/NR): \$15 / \$19

Registration Deadline, September 2

### Winter Session - Saturdays / 4 Weeks

January 14 – February 4

Ages 4-6 11:00AM-11:30AM Class # 404005-01

Ages 7-9 11:45AM-12:15PM Class # 404005-02

Location: UW Fox Valley Field House (1478 Midway Rd.)

FEE (R/NR): \$15 / \$19

Registration Deadline, January 7

## IMAGINATION STATION

(Ages 2-4 with Parent/Guardian)

This is an introductory art class where children will experiment with art objects such as paint, scissors, glue, glitter, crayons, shaving cream and more! With parent involvement, children will create with their imagination and explore their senses. There will not be a specific craft completed to take home, but it will be messy and fun!

### Fall Session - Saturdays / 6 Weeks

October 15 – November 19

10:45-11:15AM Class # 302005-03

Location: Community Center (1000 Valley Rd.)

FEE (R/NR): \$18 / \$22

Registration Deadline, October 7

### Winter Session - Saturdays / 6 Weeks

January 21 – February 25

10:45-11:15AM Class # 402005-02

Location: Community Center (1000 Valley Rd.)

FEE (R/NR): \$18 / \$22

Registration Deadline, January 13







## ZUMBATOMIC

(Ages 4-13)

Designed exclusively for kids, Zumbatomic classes are rockin', high-energy fitness-parties packed with specially choreographed, kid-friendly routines and all the music kids love, like hip-hop, reggaeton, cumbia and more. Parents love Zumbatomic because of the effects it has on kids, increasing their focus and self-confidence, boosting metabolism and enhancing coordination. Safe and effective, kids can't wait to get into the Zumbatomic groove. Participants should wear tennis shoes and exercise clothing.

### (Ages 4-6) Fall Sessions – Fridays / 6 Weeks

September 16 – October 21

Class # 304005-03

November 4 – December 16 (No Class Nov. 25)

Class # 304005-04

10:00-10:30AM

Location: Community Center (1000 Valley Rd.)

FEE (R/NR): \$20 / \$25

Registration Deadline, September 9 / October 28

### (Ages 7-13) Fall Sessions – Thursdays / 6 Weeks

September 15 – October 20

Class # 304005-05

November 3 – December 15 (No Class Nov. 24)

Class # 304005-06

4:15-4:45PM

Location: Community Center (1000 Valley Rd.)

FEE (R/NR): \$20 / \$25

Registration Deadline, September 8 / October 27

### (Ages 4-6) Winter Sessions – Fridays / 6 Weeks

January 13 – February 17

Class # 404005-03

March 2 – April 6

Class # 404005-04

10:00-10:30AM

Location: Community Center (1000 Valley Rd.)

FEE (R/NR): \$20 / \$25

Registration Deadline, January 6 / February 24

### (Ages 7-13) Winter Sessions – Thursdays / 6 Weeks

January 12 – February 16

Class # 404005-05

March 1 – April 5

Class # 404005-06

4:15-4:45PM

Location: Community Center (1000 Valley Rd.)

FEE (R/NR): \$20 / \$25

Registration Deadline, January 5 / February 23

## MINI MONETS YOUTH DRAWING

(Ages 6-12)

Join us as we learn how to draw colorful, vibrant still lifes and landscapes with chalk pastels. This is a great way for children to experience drawing with a new art medium while having fun, using their creativity and getting slightly messy. Old clothes are recommended as the chalk might be messy.

### Fall Session - Wednesdays / 4 Weeks

September 28 – October 19

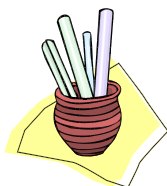
6:00-7:00PM

Class # 301200-01

Location: Community Center (1000 Valley Rd.)

FEE (R/NR): \$18 / \$22

Registration Deadline, September 21



### Winter Session - Wednesdays / 4 Weeks

January 18 – February 8

6:00-7:00PM

Class # 401200-01

Location: Community Center (1000 Valley Rd.)

FEE (R/NR): \$18 / \$22

Registration Deadline, January 11

## PAINTING PICASSOS

(Ages 6-12)

Everyone loves to paint! Join us as we learn how to paint a variety of scenes with different types of paint materials. Participants will do small paint projects that will allow them to use their imagination and creativity. Each week will focus around a different theme. Old clothes are recommended as the paint might be messy.

### Fall Session - Wednesdays / 4 Weeks

October 26 – November 16

6:00-7:00PM

Class # 301200-02

Location: Community Center (1000 Valley Rd.)

FEE (R/NR): \$18 / \$22

Registration Deadline, October 19

### Winter Session - Wednesdays / 4 Weeks

February 15 – March 7

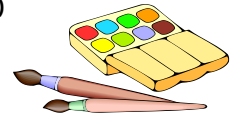
6:00-7:00PM

Class # 401200-02

Location: Community Center (1000 Valley Rd.)

FEE (R/NR): \$18 / \$22

Registration Deadline, February 8



MINI MONETS



YOUTH NATURE CLASSES



## KARATE COURSE FOR BEGINNERS

(Ages 4-12)

Karate America's Confidence and Fun Course is a Martial Arts class for beginners. At Karate America, we are dedicated to three core values. BELIEVE: Your Child will learn that the first step to any success is belief in themselves. WORK HARD: We believe in hard work at school, at home and in life. Hard work builds discipline, character and strength. Watch as your child grows physically fit, mentally strong and socially prepared. BE NICE: The foundation of our program is built on courtesy, respect and honor. Our environment fosters an attitude that will supercharge your child and propel them to reaching their full potential. (The fee includes the classes, uniform for first time students, and also the option to attend a 2nd class during the week with the regular class schedule.)



### Saturdays / 4 Weeks

February 4 – February 25

Ages 4-7

1:30-2:00PM

Class # 402000-07

Ages 8-12

2:00-2:30PM

Class # 402000-08

Location: Karate America (870 Fox Point Plaza)

FEE (R/NR): \$45 / \$56

Registration Deadline, January 27



## AUTUMN'S CHANGES

(Ages 3-9)

Come learn about the changes that autumn brings. We will learn about autumn's amazing colors, seeds that travel, and how the animals get ready for winter. Each lesson includes stories, hands-on learning and a simple craft. Offered by Naturalist Lori Nichols of Nichols Nature Sense.

### Mondays / 5 Weeks

October 3 – October 31

Ages 3-6 9:30-10:30AM Class # 303000-01

### Thursdays / 5 Weeks

October 6 – November 3

Ages 5-9 6:30-7:30PM Class # 303000-02

Location: Community Center (1000 Valley Rd.)

FEE (R/NR): \$18 / \$22

Registration Deadline, September 26 / September 29

## ON THE HUNT FOR ANIMALS

(Ages 3-6)

In this class we'll learn about the different animals that are hunted in Wisconsin. These animals include ducks, geese, bears, turkey, and white tailed deer. Animal exploration will be done through stories, hands-on learning, and craft activities. Offered by Naturalist Lori Nichols of Nichols Nature Sense.

### Mondays / 4 Weeks

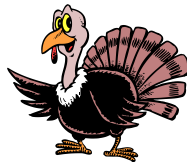
November 7 – November 28

9:30-10:30AM Class # 303000-03

Location: Community Center (1000 Valley Rd.)

FEE (R/NR): \$16 / \$20

Registration Deadline, October 31



## PLAYFUL FRIENDS

(Ages 3-6)

Come play games and make new friends while we learn about animals. We will learn about playful otters, wise owls, mice, sneaky foxes, and rabbits. They all love to be outside in the cold Wisconsin winters. Each lesson will include stories, games, a simple craft and a lot of hands-on learning. Offered by Naturalist Lori Nichols of Nichols Nature Sense.

### Mondays / 5 Weeks

January 2 – January 30

9:30-10:30AM Class # 403000-01

Location: Community Center (1000 Valley Rd.)

FEE (R/NR): \$18 / \$22

Registration Deadline, December 26

## WAKE UP EVERYONE

(Ages 3-9)

In this class we'll learn about the animals that are waking up from their deep winter's sleep just in time for spring. We will learn about groundhogs, ladybugs, black bears, and raccoons. Each lesson includes stories, hands-on learning, and a craft activity. Offered by Naturalist Lori Nichols of Nichols Nature Sense.

### Mondays / 4 Weeks

February 6 – February 27

Ages 3-6 9:30-10:30AM Class # 403000-02

### Thursdays / 4 Weeks

February 9 – March 1

Ages 5-9 6:30-7:30PM Class # 403000-03

Location: Community Center (1000 Valley Rd.)

FEE (R/NR): \$16 / \$20

Registration Deadline, January 30 / February 2



## KIDSTAGE YOUTH THEATRE CLASSES

### PETER PAN & CHARLOTTE'S WEB

(Ages 5-14)



The KidStage Acting Program focuses on weekly acting exercises which will build self confidence, reduce shyness, and develop leadership and creativity skills. All children will be cast in age appropriate roles and rehearse for a production to be presented in the KidStage Showcase (December 3 & 4 and March 24 & 25). Everyone will be on stage—no one is left out! Classes will be split according to age. Level 1 – Ages 5-8 / Level 2 – Ages 9-14. Fall production: PETER PAN. Winter production: CHARLOTTE'S WEB.

### Fall Session – Tuesdays / 10 Weeks

September 27 – November 29

Ages 5-14 6:15-7:15PM Class # 303000-07

Location: Community Center (1000 Valley Rd.)

FEE (R/NR): \$85 / \$106

Registration Deadline, September 20

### Winter Session - Tuesdays / 10 Weeks

January 17 – March 20

Ages 5-14 6:15-7:15PM Class # 403000-05

Location: Community Center (1000 Valley Rd.)

FEE (R/NR): \$85 / \$106

Registration Deadline, January 10



## UW FOX LITTLE DRIBBLERS BASKETBALL

(Ages 4-7)

Is your little one excited about the sport of basketball? In this clinic UW-Fox Men's Basketball Coach Lee Rabas and staff will teach participants stationary ball handling, dribbling, dribbling games, offensive footwork, shooting technique, passing, and how to receive a pass. This clinic is a unique opportunity designed to combine skills, teamwork, and FUN!

### Saturdays / 4 Weeks

October 8 – October 29

Ages 4-5 10:00-10:45AM Class # 303005-01

Ages 6-7 11:00-11:45AM Class # 303005-02

Location: UW-Fox Valley Field House (1478 Midway Rd.)

FEE (R/NR): \$18 / \$22

Registration Deadline, September 30



## TAE KWON DO

(Ages 8+)

This exciting and dynamic class is packed full of great martial arts instruction. Not only will the students learn the basic skills of the martial arts, but lessons such as courtesy, respect, and discipline will be covered as well. This is an introductory class for individuals who have not previously been enrolled. Instructor: Lance Lewis

### Fall Session - Tuesdays / 8 Weeks

September 27 – November 15

6:00-6:45PM Class # 302001-01

Location: New Hope School (1850 American Dr.)

FEE (R/NR): \$40 / \$50

Registration Deadline, September 20

### Winter Session - Tuesdays / 8 Weeks

January 10 – February 28

6:00-6:45PM Class # 402000-06

Location: New Hope School (1850 American Dr.)

FEE (R/NR): \$40 / \$50

Registration Deadline, January 3

## 2011/2012 Dance Program

Instructors: Carla Hales, Tou Vang, & Erin Othrow

**POPULAR!**

## 9<sup>TH</sup> ANNUAL DANCE RECITAL

Participants who enroll in both the fall 2011 & winter 2012 sessions will have the opportunity to participate in the annual dance recital, tentatively scheduled for Friday, March 30, 2012 (rehearsal scheduled for Thursday, March 29). Please expect a costume fee between \$30-\$45, due during the fall session.

The primary focus of the winter session is to refine skills and practice the routine for the recital; therefore it is strongly recommended that students not miss more than 3 classes in this session. If your child misses more than 3 classes, it will be up to the instructor's discretion whether or not they will be allowed to perform in the recital.

### OVERVIEW

The first 2 weeks of classes will be used as a time to assess the skill level of each participant. It is possible that your child will be asked to switch classes to fit in an appropriate level.

\*\*The fall session is a prerequisite to be enrolled in the winter session, students interested in the winter session must also have been enrolled in the fall session.

Classes take place at the Community Center (1000 Valley Rd.)

Registration Deadline, August 31

### BALLET

Ballet is the most important of all the dance mediums. Students will learn grace in movement, body posture and placement, balance, and flexibility. Even if your child is a jazz student, ballet will greatly benefit her/his technique and ability to learn more quickly.

### JAZZ

Get ready to move! Jazz is recommended after students have already taken at least two years of ballet (though this is not required). Emphasis is on technique, body posture, musicality and the ability to remember combinations of steps. Dancers will learn how to count music and keep a beat. Jazz is more up-tempo than ballet and, therefore, instruction is often more fast-paced.

### TAP

Dancers won't be able to keep their feet still! Learn how to make sounds with your shoes, keep and change rhythms, and identify different beats with music – all while having fun!

### WEEKLY DANCE ATTIRE

**Ballet:** Tights, leotard (pink or white) and pink ballet slippers (with a sole on the bottom).

**Jazz:** Black dance or yoga pants (no jeans or baggy clothing) and black jazz shoes.

**Tap:** Black dance or yoga pants (pants should not be too long as they would interfere with the shoe) and tap shoes.

**Hip Hop:** Any type of comfortable clothing and tennis shoes (no black soles).

### HIP HOP

Hip hop is a fun but faster pace type of dancing. Dancers will learn how to wave, isolate, robot, tutt, and more! Dancers will also learn the true essence and history of hip hop.

Level 1 Classes – students with 0-1 year hip hop instruction

Level 2 Classes – students with 2+ years hip hop instruction

### COMPETITION TEAMS

These are closed classes for members of the competition teams only. Auditions were required to be on one of the competition teams.

★ Fall - 12 Weeks / September 14 - December 14 (No Class October 26 or November 23)

★ Winter - 12 Weeks / January 4 - March 21 + (Rehearsal - March 29 / Recital - March 30)

CLASS	AGE	DAY	TIME	CLASS # (Fall/Winter**)	FEE (R / NR)	INST.
Ballet	4-6	Wednesday	5:00-5:30PM	304000-01 / 404006-01	Fall \$33 / \$41 Winter \$39 / \$49	CH
Jazz	7-10	Wednesday	5:35-6:05PM	304000-02 / 404006-02	Fall \$33 / \$41 Winter \$39 / \$49	CH
Ballet	7-10	Wednesday	6:10-6:40PM	304000-03 / 404006-03	Fall \$33 / \$41 Winter \$39 / \$49	CH
Junior Comp.	8-11	Wednesday	6:45-7:30PM	304000-04 / 404006-04	Fall \$48 / \$60 Winter \$60 / \$75	CH
Jazz Mixed Level	11-14	Wednesday	7:35-8:05PM	304000-05 / 404006-05	Fall \$33 / \$41 Winter \$39 / \$49	CH

CLASS	AGE	DAY	TIME	CLASS # (Fall/Winter**)	FEE (R / NR)	INST.
Hip Hop Level 1	6-9	Wednesday	5:00-5:30PM	304000-06 / 404006-06	Fall \$33 / \$41 Winter \$39 / \$49	TV
Hip Hop Level 2	6-9	Wednesday	5:35-6:20PM	304000-07 / 404006-07	Fall \$48 / \$60 Winter \$60 / \$75	TV
Hip Hop Level 2	9+	Wednesday	6:25-7:10PM	304000-08 / 404006-08	Fall \$48 / \$60 Winter \$60 / \$75	TV
Hip Hop Level 1	9+	Wednesday	7:15-7:45PM	304000-09 / 404006-09	Fall \$33 / \$41 Winter \$39 / \$49	TV

★ Fall - 12 Weeks / September 15 - December 15 (No Class October 27 or November 24) (\*\*please see note below)

★ Winter - 12 Weeks / January 5 - March 22 + (Rehearsal - March 29 / Recital - March 30)

CLASS	AGE	DAY	TIME	CLASS # (Fall/Winter**)	FEE (R / NR)	INST.
Ballet	4-6	Thursday	5:00-5:30PM	304000-10 / 404006-10	Fall \$33 / \$41 Winter \$39 / \$49	EO
Jazz	4-6	Thursday	5:35-6:05PM	304000-11 / 404006-11	Fall \$33 / \$41 Winter \$39 / \$49	EO
Ballet	4-6	Thursday	6:10-6:40PM	304000-12 / 404006-12	Fall \$33 / \$41 Winter \$39 / \$49	EO
Ballet	7-10	Thursday	6:45-7:15PM	304000-13 / 404006-13	Fall \$33 / \$41 Winter \$39 / \$49	EO
Tap	7-10	Thursday	7:20-7:50PM	304000-14 / 404006-14	Fall \$33 / \$41 Winter \$39 / \$49	EO

CLASS	AGE	DAY	TIME	CLASS # (Fall/Winter**)	FEE (R / NR)	INST.
Sm. Group Jazz	12+	Thursday	5:00-5:30PM	304000-15 / 404006-15	Fall \$33 / \$41 Winter \$39 / \$49	CH
Teen Comp. Jazz	12+	Thursday	5:35-6:20PM	304000-16 / 404006-16	Fall \$48 / \$60 Winter \$60 / \$75	CH
Comp Ballet/Lyrical	12+	Thursday	6:25-7:10PM	304000-17 / 404006-17	Fall \$48 / \$60 Winter \$60 / \$75	CH
Sm. Group Lyrical	12+	Thursday	7:15-7:45PM	304000-18 / 404006-18	Fall \$33 / \$41 Winter \$39 / \$49	CH

\*\*Note: Miss Erin's dance classes will be cancelled on Thursday, September 22



## DANCE OPEN HOUSE NIGHT

Come to the dance open house night and meet our dance instructors, Miss Carla, Miss Erin and Mr. Vang. You'll be able to introduce yourself and your dancer as well as ask any questions you may have related to the Town of Menasha Dance Program.

**WHEN: WEDNESDAY - AUGUST 24**

**TIME: 5:00-7:00PM**

**LOCATION: COMMUNITY CENTER (1000 VALLEY RD.)**

## MEET OUR NEW DANCE INSTRUCTOR

Hey there dancers! My name is Erin and I am very excited to start dancing with you all! I have been dancing for 20 years and I have a dance minor from UW-Whitewater. As a dance student I have been involved in several dance productions on campus both as a dancer and choreographer. My choreography was also performed at ACDFA in 2010.

Throughout my college career I was very active with the UWW Dance Company as a Homecoming Board member. I love to dance and it has always been something I love to share with others. I am looking forward to teaching you some new skills as I learn all about you throughout the upcoming year.

~Erin Othrow



YOUTH DANCE

## MAD SCIENCE SPOOKY, SILLY SCIENCE SHOW

(Ages 4-12)

Prepare for science tricks and treats as we present our most famous Halloween elixirs. We'll show you how a Mad Scientist prepares their costume with a bit of FLASH and flare! Jr. Scientists will love to find out how the seemingly sane Mr. Bernoulli helped the Mad Scientist float an eyeball in the air. Cauldrons of frothing witches brews and warlock potions will complete your experience with the most "maddening" Halloween ever! All will have a few hours of gruesome goodness and fun. After the show participants will get to tour through some hands-on fun stations including: make your own spider slime to take home, make your own yummy edible ghosts (cotton candy), and go on a skeleton dig for fossils.

**Thursday - October 27**

**9:30-11:30AM Class # 303000-06**

**Location: Community Center (1000 Valley Rd.)**

**FEE (R/NR): \$30 / \$38**

*Registration Deadline, October 19*



## MAD SCIENCE WACKY, WINTER SCIENCE SHOW

(Ages 4-12)

Join a real Mad Scientist for a few hours of festive fun! We will start the program off with our Wacky Winter Science Show! Through a mixture of science and magic the children will see a playing card vanish only to reappear again neatly gift-wrapped! Children will hear how Frosty Egbert ate too many holiday treats and now needs our scientists help to fit back into his house. They will also watch as our special Snowman is de-frosted right before their eyes! We need some brave audience volunteers to help us discover how Jack Frost can fill an eight-foot air bag with one breath. For added fun, the Mad Scientist will make bubbling potions and create clouds of fog. After the show participants will get to tour through some hands-on fun stations including: make your own snowy forest crystal gardens, holiday magic bracelets, and make your own winter sparkle slime to take home.

**Friday - January 20**

**1:30-3:30PM Class # 403000-04**

**Location: Community Center (1000 Valley Rd.)**

**FEE (R/NR): \$30 / \$38**

*Registration Deadline, January 12*



## DIGITAL PHOTOGRAPHY WORKSHOP

(Ages 16+)

Say "YES!" to digital photography! Take your imagination in new directions and discover the benefits of using your digital camera. Learn how to improve your results by using all the features your camera has to offer, while also learning about composition, exposure, flash, and lighting techniques. We will work with imaging software and make ordinary pictures extraordinary! Bring a camera, manuals and/or photos for critique. Presented by award-winning photographer, Eileen Herling

**Spring Session - Wednesdays / 3 Weeks**

**October 5 - October 19**

**6:30-8:30PM**

**Class # 309000-01**

**Location: Community Center (1000 Valley Rd.)**

**FEE (R/NR): \$23 / \$29**

*Registration Deadline, September 28*

**Summer Session - Wednesdays / 3 Weeks**

**February 1 - February 15**

**6:30-8:30PM**

**Class # 409000-01**

**Location: Community Center (1000 Valley Rd.)**

**FEE (R/NR): \$23 / \$29**

*Registration Deadline, January 25*



ZUMBA & ZUMBA GOLD

## HEALTHY LIFESTYLE CLASSES

The Town of Menasha and City of Appleton Parks & Recreation Departments are partnering to offer several classes at both locations. All classes are available with a drop-in fee or full session fee. Drop-in fees are paid directly at the class location. Full session fees are paid in advance by registering for the class through the Town of Menasha office. For all classes: please bring a yoga mat and a firm blanket to class.

Julie Vosters: ERYT, Anusara-inspired yoga teacher, brings vibrant energy and encouragement to students so they may discover joy and health in their lives. Julie has been studying Anusara Yoga since 1999 and embraces this wisdom to share the transformative & life affirming mindfulness with others. For 11 years, students & clients have been able to discover the vitality Julie expresses for life in yoga, yoga therapy, ice skating, & core body strengthening. With kindness and compassion, Julie enjoys helping others enhance their well-being & exploration of life while realizing more than they ever thought possible.

## YOGA THERAPEUTICS FOR SURVIVING BREAST CANCER

Savor lighthearted evenings that nurture and revitalize. Discover how you can feel vibrant and joyful through the mindfulness and movement of therapeutic yoga. With support and guidance, learn tools to: gain broader understanding mentally, wider perspectives emotionally, and greater physical stamina and strength. Uncover the inner wisdom of healing through this class format, yet as an individual, you can take home therapeutic techniques that are customized to your own needs and concerns. A warm welcome to all who have been recently diagnosed, are undergoing chemotherapy and/or radiation, have had a lumpectomy, or had reconstructive surgery, and those that have survived breast cancer for years.

## YOGA: BEGINNER & INTERMEDIATE

An excellent fit for new and continuing students. Asana practice will be infused with a variety of poses that are adaptable for all levels. Breathing and mindfulness will also be explored. Students with physical concerns welcome.

## YOGA: INTERMEDIATE & ENERGETIC

With a more explorative and energetic practice, continuing students may enjoy a more physically diverse asana practice. Students with prior yoga experience welcome. Please note: new/ beginning students will find the "Yoga: Beginner & Relaxation" and "Yoga: Beginner & Intermediate" classes a more enjoyable first time experience.

## SYNERGIE: BEGINNER & INTERMEDIATE

A blend of dance, Pilates, yoga, and ice skating techniques will help tone and shape the body. Concentration on core body (hip to shoulder area) exercises will expand into stretching thereby increasing strength, flexibility, agility and posture - creating a healthy back and building upper body strength. Energizing and great for any physical fitness level; learn how to move safely and at your own pace. No experience necessary, those with physical concerns welcome.

## YOGA: BASICS & RELAXATION

With emphasis on a well-rounded, slower paced approach to yoga basics, this class is geared to new and beginner students, those with injuries or physical concerns, and students with experience that enjoy a more calming asana practice - pranayama (breathing) and mindfulness included.

**Fall – Mondays:** September 12 – December 12 (12 classes / 2 skip days TBA)

**Fall – Tuesdays:** September 6 – December 6 (12 classes / 2 skip days TBA)

**Fall – Thursdays:** September 8 – December 8 (12 classes / 2 skip days TBA)

**\*\*Students may also "drop-in" for any class.  
Please pay \$10 to the instructor at class.**

Location	Class	Ages	Day	Time	Fall Fee	Fall #
TOM	Surviving Br. Cancer	18+	MON	6:00-7:00PM	\$96	310000-10
TOM	Synergie	12+	TUE	5:15-6:05PM	\$96	310000-11
TOM	Yoga: Basics & Relax.	12+	TUE	6:15-7:15PM	\$96	310000-12
APP	Yoga: Beg. & Int.	12+	TUE	11:00AM-Noon	\$96	310000-13
APP	Yoga: Int. & Energ.	12+	THUR	5:30-6:30PM	\$96	310000-14

**Winter – Mondays:** January 9 – March 12 (8 classes / 2 skip days TBA)

**Winter – Tuesdays:** January 10 – March 13 (8 classes / 2 skip days TBA)

**Winter – Thursdays:** January 12 – March 15 (8 classes / 2 skip days TBA)

Location	Class	Ages	Day	Time	Winter Fee	Winter #
TOM	Surviving Br. Cancer	18+	MON	6:00-7:00PM	\$64	405006-10
TOM	Synergie	12+	TUE	5:15-6:05PM	\$64	405006-11
TOM	Yoga: Basics & Relax.	12+	TUE	6:15-7:15PM	\$64	405006-12
APP	Yoga: Beg. & Int.	12+	TUE	11:00AM-Noon	\$64	405006-13
APP	Yoga: Int. & Energ.	12+	THUR	5:30-6:30PM	\$64	405006-14

**Town of Menasha (TOM): Community Center—1000 Valley Rd., Menasha  
Appleton (APP): City Center—100 N. Appleton St., Appleton**



**ZUMBA**  
(Ages 14+)

**POPULAR!**

Ditch the workout, join the party! Zumba is the latest international fitness rage. This Latin inspired workout combines easy to do Latin dance steps with a mixture of body sculpting movements. Zumba features aerobic/fitness interval training to maximize caloric output and increase fat burning with total body toning. Zumba is a "feel happy" workout that is great for both the body and the mind. New this fall - expanded room size for the Monday evening class!

**\*Zumba Location (Monday PM, Tuesday AM, Thursday AM):**  
Community Center (1000 Valley Rd.)

**\*Zumba Location (Thursday PM):**  
Gegan Elementary School (675 Airport Rd.)

Registration Deadlines, one week prior to the start of each class

**ZUMBA GOLD**  
(Active Seniors & Fitness Beginners)

Zumba Gold is designed for active seniors, fitness beginners, and those who may be limited physically. Zumba Gold is done at a much lower intensity than Zumba. The same great Latin styles of music and dance are used and just as fun as regular Zumba classes.

**TRY IT FREE** - Join us on September 16 to give Zumba Gold a try for free! Class will take place from 9:00-9:45AM at the Community Center.

**\*Zumba Gold Location:** Community Center (1000 Valley Rd.)

Registration Deadlines, one week prior to the start of each class



**Fall Zumba Schedule**

Monday Evenings: September 19 – December 12 (No Class Nov. 21)  
Thursday Evenings: September 22 – December 15 (No Class Nov. 24)  
Tuesday Mornings: September 20 – December 13 (No Class Nov. 22)  
Thursday Mornings: September 22 – December 15 (No Class Nov. 24)

**Fall Zumba Gold Schedule**

Wednesdays: September 21 – December 14 (No Class Nov. 23)  
Fridays: September 23 – December 16 (No Class Nov. 25)

**Winter Zumba Schedule**

Monday Evenings: January 9 – March 26  
Thursday Evenings: January 12 – March 29  
Tuesday Mornings: January 10 – March 27  
Thursday Mornings: January 12 – March 29

**Winter Zumba Gold Schedule**

Wednesdays: January 11 – March 28  
Fridays: January 13 – March 30

Class	Day	Location	Time	FEE (R/NR)	Fall Class #	Winter Class #
Zumba	Mondays	Com. Center	5:45-6:30PM	\$48 / \$60	310000-01	405006-01
Zumba	Thursdays	Gegan Elem.	5:45-6:30PM	\$48 / \$60	310000-02	405006-02
Zumba	Mondays & Thursdays	CC/Gegan El.	5:45-6:30PM	\$86 / \$108	310000-03	405006-03
Zumba Gold	Wednesdays	Com. Center	10:15-11:00AM	\$48 / \$60	310000-04	405006-04
Zumba Gold	Fridays	Com. Center	9:00-9:45AM	\$48 / \$60	310000-05	405006-05
Zumba Gold	Wednesdays & Fridays	Com. Center	10:15A/9:00A	\$86 / \$108	310000-06	405006-06
Zumba	Tuesdays	Com. Center	5:30-6:15AM	\$48 / \$60	310000-07	405006-07
Zumba	Thursdays	Com. Center	5:30-6:15AM	\$48 / \$60	310000-08	405006-08
Zumba	Tuesdays & Thursdays	Com. Center	5:30-6:15AM	\$86 / \$108	310000-09	405006-09

**THANK YOU SUMMER RECREATION PROGRAM SPONSORS!**



Health & Fitness Challenge



Family Entertainment Series



Family Entertainment Series



Family Entertainment Series



Building Excellence

Health & Fitness Challenge



Messy Fest



Family Entertainment Series

Health & Fitness Challenge



fast - convenient - affordable

Health & Fitness Challenge

## RECREATION PROGRAM POLICIES

### LIABILITY INFORMATION

Parks and recreation activities involve an element of risk or danger for all participants and may cause serious injury, death, or property loss. The Town of Menasha does not provide or cover any medical or hospital insurance for participants in our programs. All persons participating in Town of Menasha Recreation sponsored programs must provide their own insurance and assume risk for all injuries. Outdoor classes are not held on days when thunder and lightning are present.

### ACCESSIBILITY STATEMENT

Reasonable accommodations will be made on an individual basis. If you require special accommodations in order to participate in a program, please inform us when you register.

### AGE & REGISTRATION EXCEPTIONS

Programs are designed according to age and/or instructor/student ratios or a level that will best benefit the student. Please do not ask us to exceed class limits or put your child in the wrong age or skill level. Participants need to meet the age requirement by the FIRST day of class.

### WAITING LISTS

If you are unable to register for a program due to full enrollment capacity, you are given the opportunity to put your name on the waiting list. There are no guarantees for placement, however if openings become available we refer to the waiting list first to fill the program.

### CANCELLING CLASSES

Unfortunately sometimes classes fail to reach their minimum enrollment capacity. If this happens we must cancel the class. You will be notified ahead of time and you will be given a full refund.

### CANCELLATIONS DUE TO WEATHER

Program cancellations will be announced on the Program Information Line at (920) 720-7139. This announcement line is updated as news arises. Every attempt will be made to reschedule a cancelled activity, however if the department is unable to reschedule the missed class, there will be no refunds for the cancellation.

### NON-RESIDENT FEES

A non-resident is defined as a person who does not reside or own property in the Town of Menasha. Non-resident fees have been created to help supplement the existing tax subsidized programs.

### CITY OF MENASHA – RESIDENT FEES

Under a reciprocity agreement between the Town of Menasha and the City of Menasha, city residents qualify for town resident fees.

### CLASS FEES AND REFUNDS

Fees are established with an attempt to standardize cost according to the number of sessions, facilities, equipment, supervision and instruction. Full refunds will be given when the department cancels a class or makes change in the class schedule that no longer fits the participant's needs or the participant submits a refund request (see Refund Policy).

### REFUND POLICY

The Town of Menasha Parks and Recreation Commission recognizes that circumstances arise causing an individual who is registered for a program to withdraw from the program and request a refund of payment. The intent of this policy is to make possible the refunding of registration fees and charges based upon circumstances beyond the control of a program participant.

- A 100% refund if a class is cancelled by the department.
- A refund less a 20% service charge, not to exceed \$5 if a refund request is received at least seven (7) days prior to the start of a program. The 20% service charge applies to each cancelled class. If a request is not made within seven (7) days prior to the start of a program, the class fee will be forfeited.
- A refund can be granted if there is a medical condition with proof from attending physician.

Refunds will not be granted for trips requiring advanced reservations or for programs that have already begun.

### FINANCIAL ASSISTANCE/ROUND UP FOR RECREATION

The Town of Menasha Parks & Recreation Department strongly believes that all area youth should have the opportunity to participate in town-sponsored recreation programs. The department does not want to exclude any child from participation due to an inability to pay. Persons who feel they are unable to afford the cost of a youth activity may apply for a reduction of the program fee. Those seeking financial assistance must complete a financial assistance application and return it to the recreation office. Monies raised from persons who have "Rounded Up" their registration fees will be utilized to help fund these financial assistance requests.

### PHOTOGRAPHS

For program promotion purposes, from time to time photos will be taken of program participants. If you do not wish to have you or your child's photo taken, please tell the photographer and/or class instructor.







# PROGRAM REGISTRATION FORM

**Resident Registration Begins Monday, August 15**  
**Non-Resident Registration Begins Monday, August 22**

FAMILY LAST NAME \_\_\_\_\_ PARENT/GUARDIAN \_\_\_\_\_  
 STREET \_\_\_\_\_ CITY \_\_\_\_\_ ZIP \_\_\_\_\_  
 HOME PHONE \_\_\_\_\_ WORK PHONE \_\_\_\_\_ EMERGENCY PHONE \_\_\_\_\_  
 EMAIL ADDRESS \_\_\_\_\_

*\*Receipts: If you would like a copy of your receipt, please include your E-mail address or a self-addressed, stamped envelope.*

RESIDENCY (Please Circle)    Town of Menasha    City of Menasha\*    Non-Resident

*\*City of Menasha residents qualify for Town of Menasha resident fees under a reciprocity agreement between the City and the Town.*

Participant's First Name	M/F	Birthday	T-Shirt Size <small>(all flag football programs only)</small>	Class Name	Class #	Fee

**NOTE:** Please inform instructor of any special concerns regarding you or your child prior to the start of the program. In case of an accident or illness, list participant's name and any conditions which medical personnel must know in order to render emergency treatment.

\_\_\_\_\_  
 \_\_\_\_\_

**Total Fees \$** \_\_\_\_\_

**Round Up For Recreation \$** \_\_\_\_\_

**Total Amount \$** \_\_\_\_\_

**LIABILITY INFORMATION:** You should be aware that Parks & Recreation programs involve an element of risk or danger for all participants and may cause serious injury, death or property loss. The Town of Menasha Parks Recreation Department does not provide or cover any medical or hospital insurance for participants in our programs. All persons participating in Town of Menasha Parks & Recreation Department sponsored activities must provide their own insurance and assume risk for all injuries.

**"ROUND UP FOR RECREATION"**  
*Rounding up your program fee helps provide financial assistance to those unable to afford the program fee for youth activities. This is an optional program.*

*I have read and understand the liability information listed above.*

ADULT/GUARDIAN SIGNATURE \_\_\_\_\_ DATE \_\_\_\_\_

3 EASY WAYS TO REGISTER - Please make checks payable to: TOWN OF MENASHA

<p style="text-align: center;"><b>WALK-IN/DROP-OFF</b></p> <p>Bring in your registration form and payment to the Town of Menasha Parks &amp; Recreation Office or drop off your completed registration form in the drop-box located outside the Municipal Complex main entrance.</p>	<p style="text-align: center;"><b>MAIL-IN</b></p> <p>Mail your completed registration form to:</p> <p style="text-align: center;"><b>Town of Menasha Park &amp; Rec.</b>  <b>2000 Municipal Drive</b>  <b>Neenah, WI 54956-5665</b></p>	<p style="text-align: center;"><b>ONLINE</b></p> <p>You may now register for programs online, 24 hours a day, 7 days a week!</p> <p>Visit <a href="http://www.town-menasha.com">www.town-menasha.com</a> and then the Parks &amp; Recreation Department homepage.</p>
--	---	---

**Town of Menasha Parks & Recreation Department**  
**2000 Municipal Drive**  
**Neenah, WI 54956-5665**  
**(920) 720-7108**

**TOWN OF MENASHA PHONE DIRECTORY**

General Information	720-7100
Administration	720-7101
Assessor	720-7102
Clerk	720-7103
Building Inspector	720-7104
Planning/Zoning	720-7105
Finance/Treasurer	720-7106
Fire	720-7125
Municipal Court	720-7107
Parks & Recreation	720-7108
Police	720-7109
Streets	720-7110
Utility	720-7175



**LOCAL CONTACT INFORMATION**

City of Appleton Parks & Recreation	832-5905
City of Menasha Parks & Recreation	967-5106
City of Neenah Parks & Recreation	886-6060
Fox Valley Sailing School	725-3423
Menasha Area Soccer Club	954-6832
Neenah Baseball Athletics, Inc.	428-7156
Palisades Athletics	830-0892
Paper Valley Youth Soccer	751-8018
Suburban Athletics	730-0758
Youth Sports Baseball	720-0711

**“ROUND UP FOR RECREATION” CONTRIBUTORS**

The following individuals have contributed to the Town of Menasha Park & Recreation Department's "Round Up For Recreation" program over the past spring/summer programming season. Contributions collected help provide financial assistance for those unable to afford program fees for youth activities.

**THANK YOU!**

Jennifer Brown ★ Rebecca Campbell ★ Blake Gruett ★ Karen Heebner ★ Tom Hoehne ★ Jennifer Hogenson  
 Nathan Holzem ★ Tina Janichek ★ Cathy Jankowski ★ Marie Koch ★ Meredith Koch ★ Amy Kufahl ★ Colleen Lehrer  
 Gina Lingnofski ★ Melissa Lisowe ★ Donna Moder ★ ToniMarie Polakowski ★ Katrina Riddle ★ Melinda Riemenapp  
 Kathryn Ruppert ★ Laura Senderhauf ★ Peyton Spindler ★ Scott Stefaniak ★ Tara Thurber ★ Heather Voss  
 Jessica Voss ★ Stephanie Winkel ★ Julie Wolfgram ★ Nicole Wolfgram