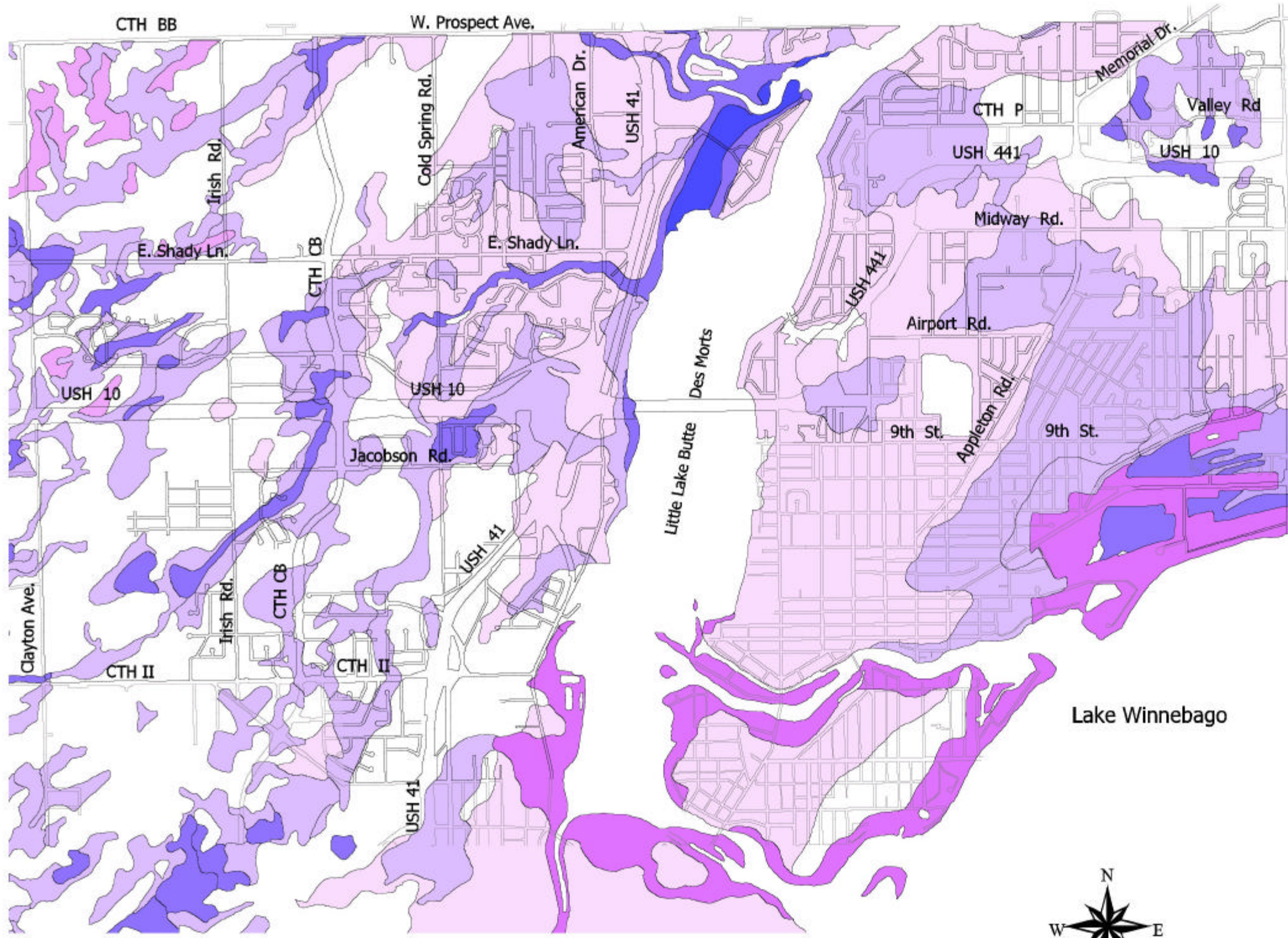


Town of Menasha

Areas of High Ground Water



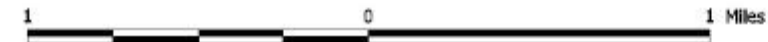
Legend

High Water Table measuring 5 feet or less

| | |
|-----------------|-------------|
| Dark Blue | -0.8 |
| Blue | 0 ft. |
| Light Blue | 0-1.5 ft. |
| Very Light Blue | 1.6-2 ft. |
| Light Purple | 2.1-2.3 ft. |
| Medium Purple | 2.4-2.5 ft. |
| Dark Purple | 2.6-2.8ft. |
| Light Pink | 2.9-4 ft. |
| White | 4.1-4.5 ft. |
| White | >4.6 ft. |

Disclaimer

Soils Data extracted from Standard State Soil Survey Database as provided by NRCS, USDA, Natural Resources Conservation Services.



This base map was created by Winnebago County Planning/GIS Department. Winnebago County expressly disclaims all liability regarding fitness of the use of the information for other than Winnebago County business by the WINGS Project.



Martenson & Eisele, Inc.

Planning - Surveying - Engineering - Architecture

1919 American Court, Neenah, WI 54956
Phone (920) 731-0381 Fax (920) 733-8578

www.martenson-eisele.com
info@martenson-eisele.com

pnav269901soils_men_11-27-02