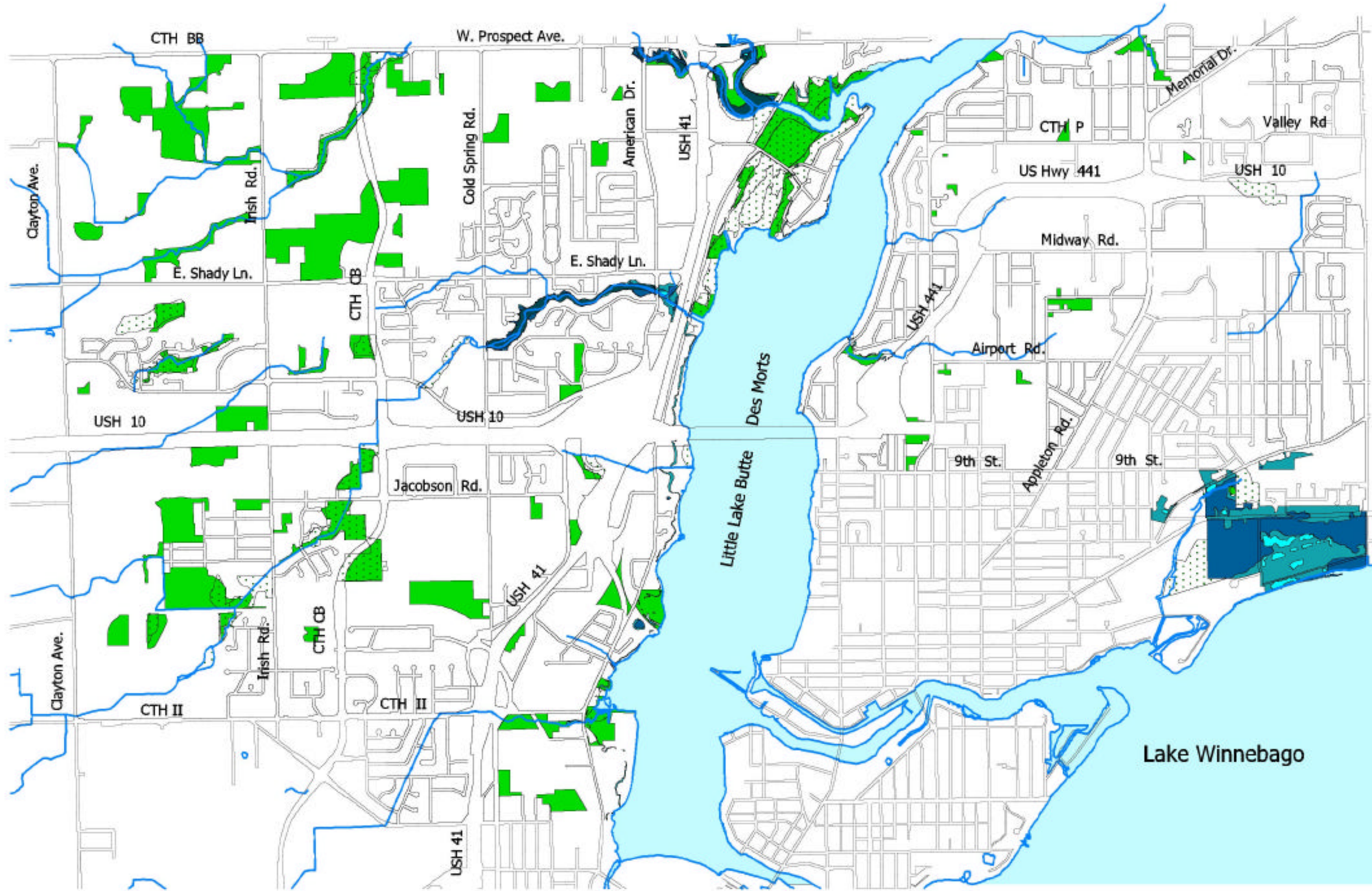


Town of Menasha

Water, Wetlands and Woodlands



Legend

- Floodways**
- Upland
- 500 year flood
- 100 year flood
- Floodway
- Surface Water
- DNR Designated Wetlands
- Woodlands



This base map was created by Winnebago County Planning/GIS Department. Winnebago County expressly disclaims all liability regarding fitness of the use of the information for other than Winnebago County business by the WINGS Project.



Martenson & Eisele, Inc.
 Planning - Surveying - Engineering - Architecture
 1919 American Court, Neenah, WI 54956
 Phone (920) 731-0381 Fax (920) 733-8578
 www.martenson-eisele.com
 info@martenson-eisele.com
 pnv269901soils_men_11-27-02