



Stormwater Utility Formation Public Hearing

Administrator Jeffrey Sturgell

June 22, 2009

Overview

- Town Ordinance Chapter 35—Municipal Stormwater Utility
- Credit Policy
- Billing Policy
- Rate Discussion

Chapter 35—Municipal Stormwater Utility Findings and Establishment

- Need in the Town for the management of stormwater
- Need in the Town for an additional revenue source to meet Department of Natural Resources (DNR) mandates for stormwater particulate reduction
- Chapter 35 establishes the Stormwater Utility

Chapter 35—Municipal Stormwater Utility Governing Body

- Town Board will serve as governing body
- Town Chairman will serve as President of the Commission and Town Supervisors as Commissioners
- Community Development Director will serve as the Administering Authority

Chapter 35—Municipal Stormwater Utility

Basis of Charge

- Equivalent Residential Unit (ERU) – computed average of the impervious surface for a single-family home in the municipality
- Typically includes the roofs, patios, and driveways
- Current calculations place the Town of Menasha ERU at 4,177 square feet

Chapter 35—Municipal Stormwater Utility Customer Classes

- All customers will be assigned to one of five classes:
 - (a) Residential, Single-Family
 - (b) Residential, Two-Four Family (including duplexes, condos up to 4 units, and mobile homes)
 - (c) Residential, Multi-Family (including condos greater than 4 units)
 - (d) Non-Residential
 - (e) Undeveloped

Chapter 35—Municipal Stormwater Utility Charge Formulas

- All classes will be assigned a charge formula:
 - (a) Residential, Single-Family 1.00 ERU fee
 - (b) Residential, Two-Four Family 0.66 ERU fee per dwelling unit
 - (c) Residential, Multi-Family 0.50 ERU fee per dwelling unit
 - (d) Non-Residential 1.00 ERU fee x imperv. area / 4,177 sq ft
 - (e) Undeveloped 0.25 ERU per parcel

Chapter 35—Municipal Stormwater Utility Charge Formula Examples

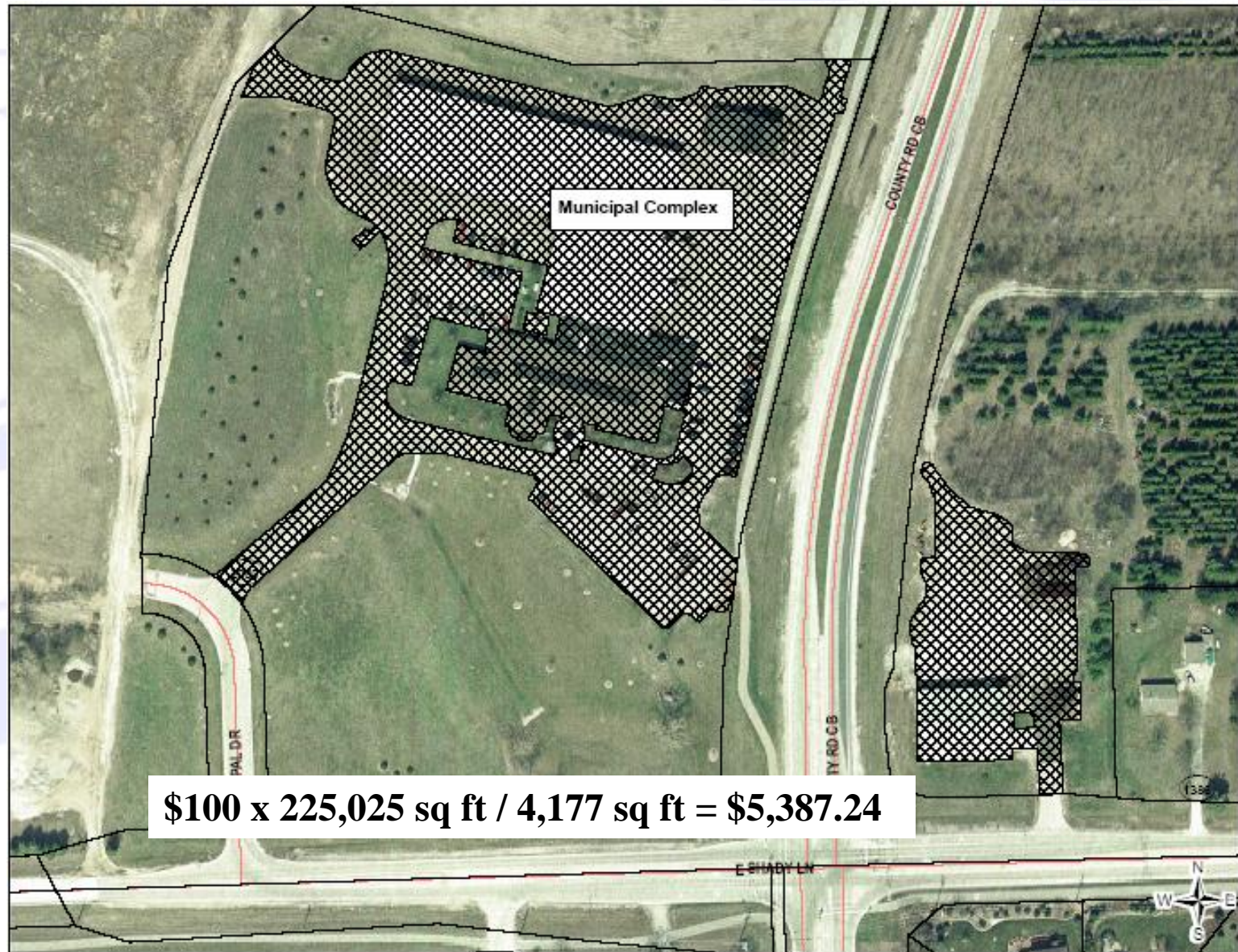
- If the ERU fee is \$100 (per year):
 - Residential Single-Family would be \$100
 $1.00 \text{ ERU per dwelling unit} \times \$100 = \$100 \text{ per dwelling unit}$
 - Residential Two-Four Family would be \$66
 $0.66 \text{ ERU per dwelling unit} \times \$100 = \$66 \text{ per dwelling unit}$
 - Residential Multi-Family would be \$50
 $0.50 \text{ ERU per dwelling unit} \times \$100 = \$50 \text{ per dwelling unit}$
 - Undeveloped parcel would be \$25
 $0.25 \text{ ERU per parcel} \times \$100 = \$25 \text{ per parcel}$

Chapter 35—Municipal Stormwater Utility Charge Formula Examples

- If the ERU fee is \$100:
 - If a non-residential parcel has 20,000 sq ft of impervious surface then the fee would be \$478.80

$$\$100 \times 20,000 \text{ sq ft} / 4,177 \text{ sq ft} = \$478.80$$

Municipal Complex Impervious Surface



Chapter 35—Municipal Stormwater Utility Credits and Adjustments

- Non-residential customers can apply for credits and/or adjustments
- Specific credit policy will be adopted by resolution
- Proposed credit policy will be discussed later in more detail

Chapter 35—Municipal Stormwater Utility

Method of Appeal

- If property owners are not satisfied with decisions on credits and/or adjustments they can appeal to the Director of Community Development
- Next and final appeal is to the Stormwater Commission

Chapter 35—Municipal Stormwater Utility Finances

- A separate Enterprise Fund will be established for all Stormwater Utility finances
- All financial activity must abide by Town Ordinance Chapter 16 Finance

Chapter 35—Municipal Stormwater Utility Billing and Collection

- Town Finance Department will serve as the collection agency for the Stormwater Utility
- Specific billing policy will be adopted by resolution
- Proposed billing policy will be discussed later in more detail

Chapter 35—Municipal Stormwater Utility Assessment Authority and Effective Date

- The Stormwater Utility will have authority to impose special assessments as necessary
- The Stormwater Utility would go into effect on August 3, 2009

Chapter 35—Municipal Stormwater Utility

Fiscal Notes

- All stormwater assets will be transferred from the Town to the Stormwater Utility
- Debt service liability for the Palisades Pond project and the 2008 Stormwater borrowing will be transferred to Stormwater Utility
- Stormwater Utility will repay Town for past payments of the Palisades Pond project and the 2008 Stormwater borrowing

Chapter 35—Municipal Stormwater Utility

Fiscal Notes continued

- Operating expenses for the Stormwater Utility would officially begin on August 3, 2009—the Town will loan the Utility money until such time as repayment can be made
- Utility billing of ERU charges would begin January 1, 2010
- Stormwater Utility Commission meetings would begin in August and occur at 5:30 pm on nights of regularly scheduled meetings



Proposed Credit Policy

Credit Policy

- There will be two (2) types of credits:
 - Reducing Runoff Flow Rate (quantity)
 - Particulate Reduction (quality)
- For non-residential customers only
- Maximum total credit is 80%

Credit Policy

Reducing Flow Rate

- Reducing Flow Rate Credit will be granted in four (4) tiers (up to a maximum of 55%):
 - First tier—Peak discharge of developed parcel is less than peak discharge prior to development—credit of 10%
 - Second tier—Peak discharge from a 3.9-inch, 24-hour storm is less than 0.40 cfs per acre—additional 15% credit
 - Third tier—Peak discharge from a 3.9-inch, 24-hour storm is less than 0.30 cfs per acre—additional 15% credit
 - Fourth tier—Peak discharge from a 3.9-inch, 24-hour storm is less than 0.15 cfs per acre—additional 15% credit

Credit Policy

Reducing Flow Rate Example

- Town of Menasha Municipal Complex:
 - Peak discharge prior to development: 1.13 cfs per acre
 - Peak discharge after development: 0.80 cfs per acre
- Town qualifies for the First tier (10%) credit

Credit Policy

Improving Water Quality

- Improving Water Quality Credit will be granted in two (2) tiers (up to a maximum of 25%)
 - First tier—Reducing Total Suspended Solids (TSS) in stormwater by 40-79% --credit of 12.5%
 - Second tier—Reducing Total Suspended Solids (TSS) in stormwater by 80% or more—additional 12.5%



Proposed Billing Policy

Billing Policy

- Finance Department serves as collection agency
- Stormwater charges will be combined on same bill as water and sewer charges
- The stormwater bill will be mailed to the utility bill recipient—the recipient is expected to pay the bill; however the property owner is ultimately responsible for the stormwater charge

Billing Policy

- Delinquency collection will follow same procedures and penalties as the water and sewer bills
- Final interpretation of the policy is left to the discretion of the Finance Director



Rate Discussion

Rate Discussion

Revenues

Total revenue potentially generated without credits/adjustments:	\$1,751,517.77
Estimated credits if quarry parcels receive full 80% credits:	(\$154,194.75)
Estimated additional credits/adjustments for other parcels:	<u>(\$100,000.00)</u>
Total revenue potentially generated with credits/adjustments:	\$1,497,323.02

Rate Discussion

Expenditure Assumptions

- a) Town will transfer remaining debt service liability for 2004 Palisades pond borrowing and 2008 Stormwater borrowing to the Stormwater Utility
- b) Town will require repayment of debt service for Palisades pond borrowing and 2008 Stormwater debt payments from the Stormwater Utility
- c) One (1) new full-time employee and one (1) seasonal staff will be added
- d) One (1) $\frac{3}{4}$ quarter ton pickup will be added

Rate Discussion

Expenditures

Total projected expenditures:	\$1,505,537.52
Revenue from Drainage Review fees:	(\$8,000.00)
Revenue from Erosion Permit fees:	<u>(\$5,000.00)</u>
Total net expenditures:	\$1,492,537.52

- **Estimated Budget Totals:**
With \$100 ERU fee the estimated revenues are: **\$1,497,323.02**
Estimated expenditures are: **\$1,492,537.52**

Annual Local Stormwater Fees

• Village of Kimberly	\$110	
• City of Appleton	\$108	
• Town of Menasha	\$100	Proposed fee
• Town of Harrison (Garners Creek Utility)	\$96	
• City of Menasha	\$65	
• Town of Greenville	\$60	
• City of Neenah	\$56	
• Town of Grand Chute	\$48	
• City of Oshkosh	\$40	

A faint, light blue background illustration of a hand holding a comb. The hand is positioned on the left side, with fingers curled around the handle of the comb. The comb's teeth are visible, extending towards the right. The overall style is minimalist and artistic, with soft lines and a light color palette.

Questions?